

# Bersa 383

---

---

## Similar/Identical Pattern Guns

The same basic assembly/disassembly steps for the Bersa Model 383 also apply to the following guns.

**Bersa Model 223**

**Bersa Model 224**

**Bersa Model 225**

**Bersa Model 226**

**Bersa Model 323**



---

<b>Data:</b>	Bersa Model 383
<b>Origin:</b>	Argentina
<b>Manufacturer:</b>	Bersa, Ramos Meja
<b>Cartridge:</b>	380 ACP
<b>Magazine capacity:</b>	7 rounds
<b>Overall length:</b>	6.61 inches
<b>Height:</b>	4.72 inches
<b>Barrel length:</b>	3.5 inches
<b>Weight:</b>	24.34 ounces

---

The earlier single-action Bersa pistols were well made and reliable, but they lacked cosmetic appeal. The current double-action models go far in the other direction—they are beautiful guns. There is a 32 ACP version, and there are four 22 Long Rifle pistols, in varying barrel lengths. The 22-caliber counterpart of the gun shown here is the Model 223. The instructions apply to all six models. On the longer-barreled 22-caliber pistols, the muzzle nut and front sight must be taken off during disassembly. Otherwise, they are the same.

---

Bersa 226 w/threaded barrel: First, unscrew thread protector and remove front sight. Then proceed as follows.

110 : Bersa Model 383

## Field Strip:

1. With the magazine removed and the hammer cocked, push the lever on the right side of the frame downward and forward until it stops. On some Bersa pistols, it will stay in that position. If not, hold it there.



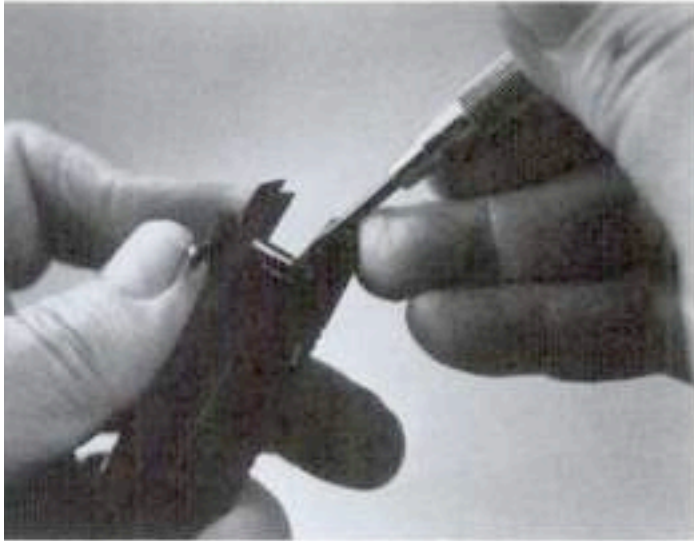
2. Draw the slide back all the way and lift it up at the rear. The slide can then be moved forward off the barrel and frame, and the recoil spring can be removed from the barrel. Gun is now field-stripped.

Bersa Model 383, field -stripped

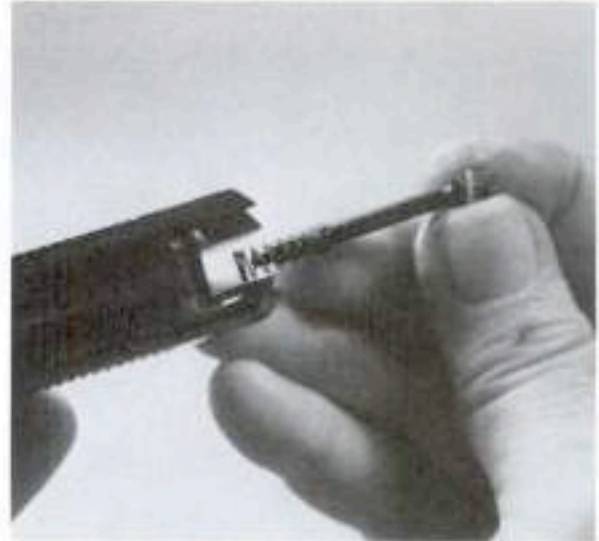


## Detail Strip:

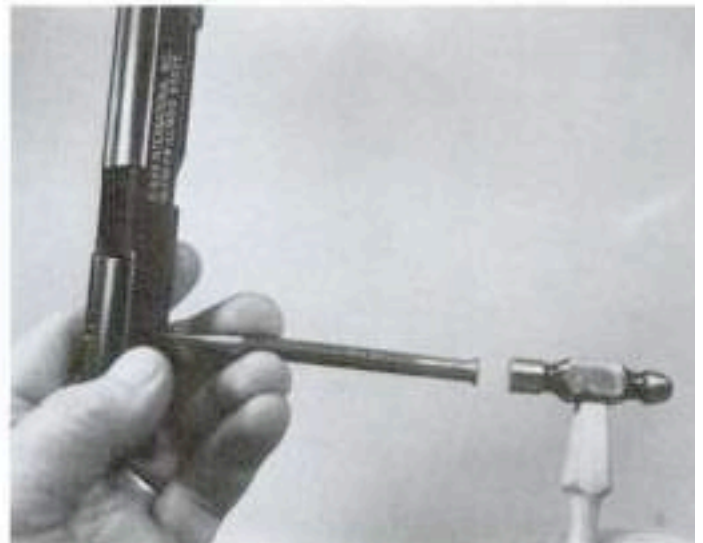
3. With the manual safety in mid-position, use a small tool to push it out toward the left. During removal, keep the lever in the same mid-orientation, to prevent the detent plunger from entering the various recesses in the cross-piece.



4. The firing pin and its spring can now be removed toward the rear. If necessary, the safety detent plunger and its spring can be nudged out of the recess in the slide, downward and toward the rear.



5. With a non-marring tool, the rear sight can be drifted out of its dovetail toward the right. The sight leaf can be taken out of the base by backing out the adjustment screw. Take care that the small coil spring behind the bottom of the leaf isn't lost.



6. The extractor is pivoted and retained by a vertical pin on the right side of the slide. The pin is driven out upward. The extractor and its spring can then be taken off toward the right.

- 14.** To remove the takedown-latch system, insert a tool between the latch stop piece and the barrel and depress the stop piece. This will allow the latch lever to be taken off toward the right. The stop piece and its spring cannot be taken out until the barrel is removed.



- 15.** The cross-shaft of the slide-latch is also the pivot and retainer for the trigger. With a tool of the proper diameter, push the shaft toward the left until the slide-latch can be grasped.



- 16.** Remove the slide latch toward the left.

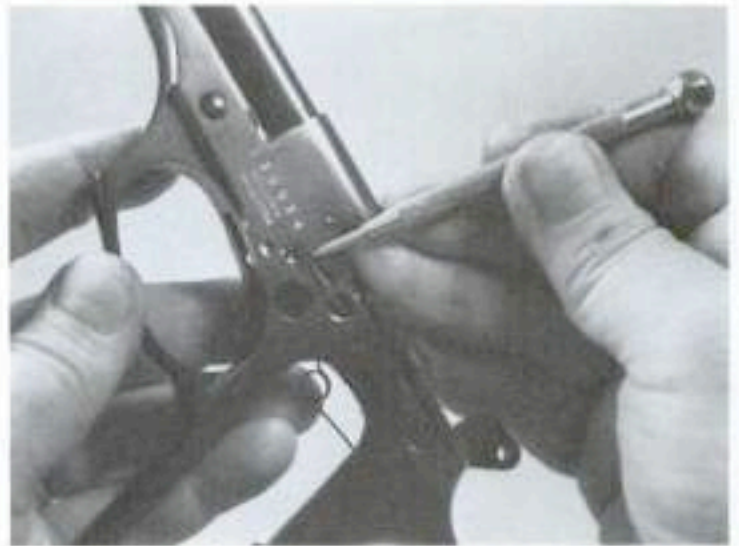
- 17.** Removal of the slide-latch will release the trigger spring to fall out the magazine well. Take care that the spring isn't overlooked and lost.



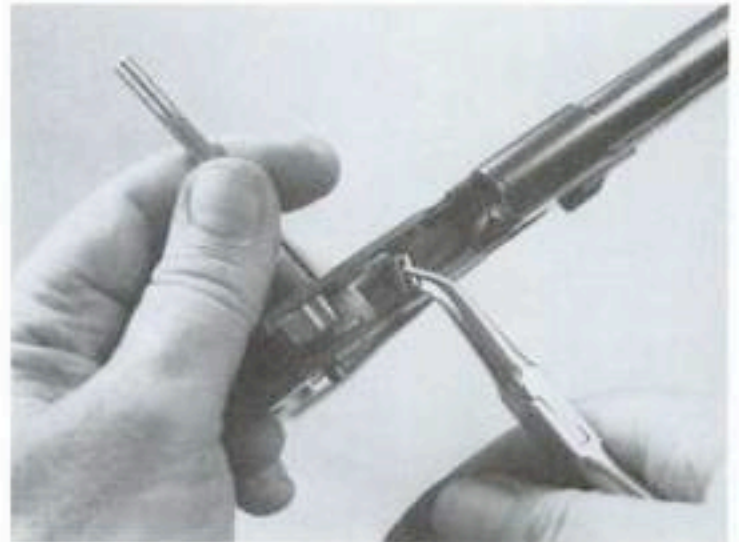
- 18.** Turn the trigger inside the guard to the position shown, and remove it toward either side.



- 19.** The slide-latch spring is staked in place, and it is best to leave it installed unless replacement is necessary.

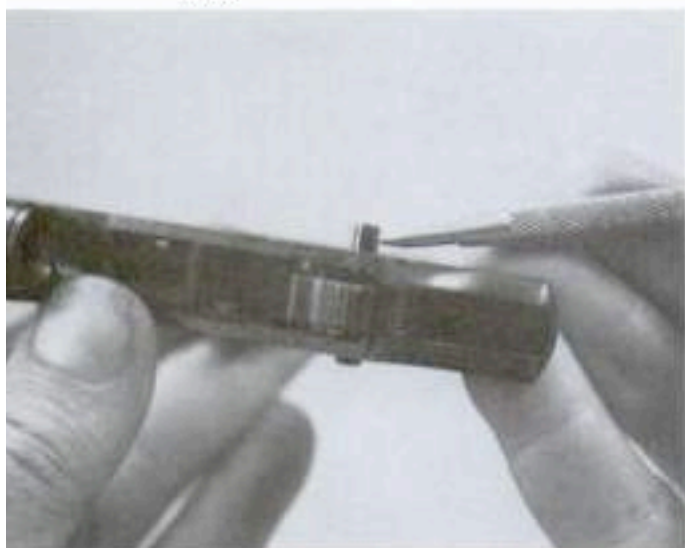


- 20.** Drift out the ejector stabilizer pin toward the right.

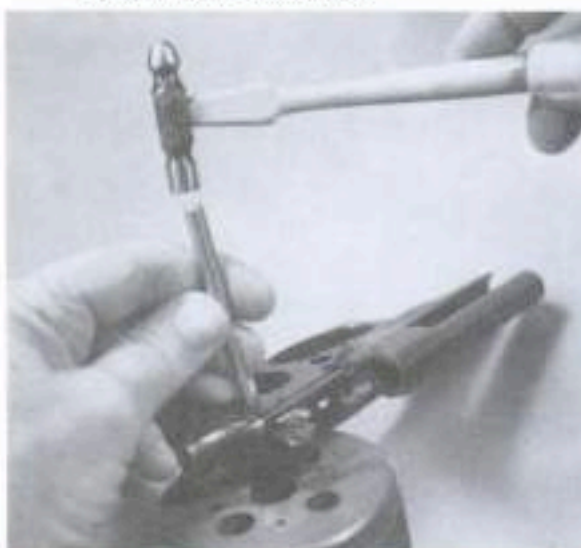


- 21.** Note that when this pin is removed, it will release a cylindrical bushing or spacer that fits between the ejector and the sear trip lever. Take care that this small part isn't lost.

- 22.** Before drifting out the hammer pivot, note that it protrudes from the frame more on the right side than on the left, and must be re-installed in that mode.



- 23.** Drifting out the hammer pivot, it is best to support the frame on a machinist's block, as shown, or on a slightly opened bench vise.

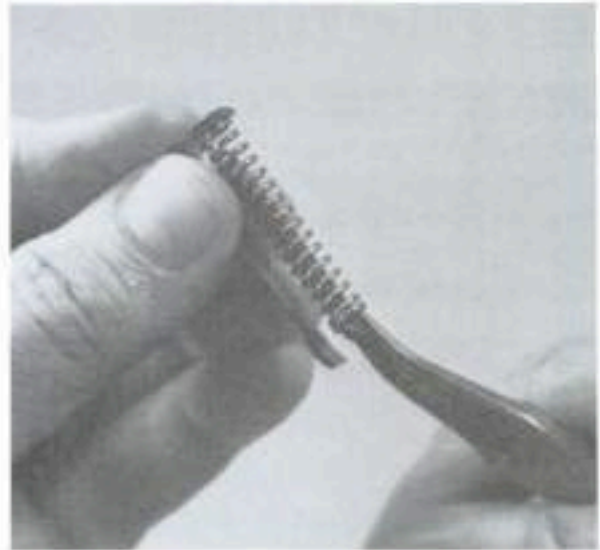


- 24.** Removal of the hammer pivot will release the hammer, ejector, and sear trip lever. All these can be taken out upward.



- 25.** The sear and hammer spring assembly can now be removed forward into the magazine well and taken out toward either side.

- 26.** Depressing the hammer spring guide slightly and turning it sideways will allow the guide and spring to be separated from the sear. **Caution:** The spring is under tension, so control it.



## Reassembly Tips:

When putting the sear and hammer spring assembly back together, grip the top of the spring guide (inverted) in a bench vise, and push the sear down on it. Or, even better, grip the top of the guide with smooth-jawed Vise-Grip pliers, rest the bottom of the sear on top of a slightly-opened vise, and push down and turn.

- 1.** The hammer, ejector, and sear trip lever are shown here assembled on the hammer pivot, in the positions they occupy in the frame.

Start the hammer pivot from the left, and install the ejector, then the hammer, then the sear trip, pushing the pin through in stages. Remember that the pin must protrude more on the right side of the frame. Use the grip panels as gauges for this.

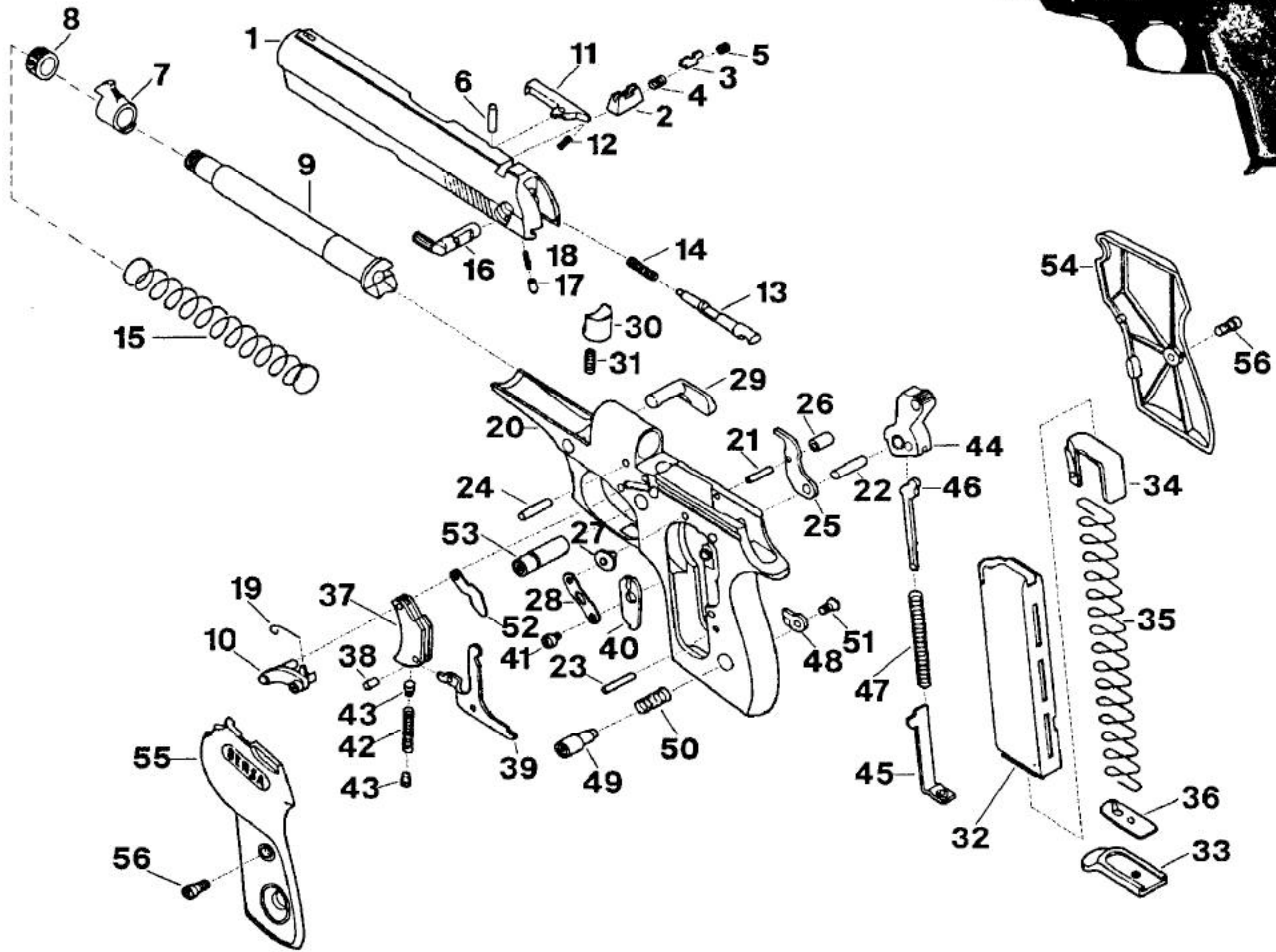
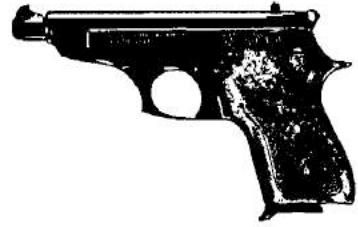
When replacing the ejector stabilizer pin, use the same by-stages insertion. Remember to replace the spacer cylinder on the pin between the ejector and sear trip.

- 2.** When installing the trigger and trigger spring, be sure the longer arm of the spring is toward the front of the trigger, as shown. A slave pin will be necessary to hold the spring in the trigger during reassembly.

As the slide-latch is moved into place, be sure the tip of the slide-latch spring goes on top of the inner lug of the latch.

When replacing the trigger bar, be sure the tip of its spring is hooked into the notch in the lower rear end of the bar. Depress the magazine safety upward as the trigger bar is installed, to insure that the upper hook of the safety engages with its shelf on the inside of the trigger bar.





- |                             |                           |
|-----------------------------|---------------------------|
| 1 Slide                     | 28 Magazine Safety Spring |
| 2 Rear Sight Body           | 29 Disassembly Piece      |
| 3 Rear Sight Blade          | 30 Slide Top              |
| 4 Rear Sight Spring         | 31 Slide Top Spring       |
| 5 Rear Sight Screw          | 32 Magazine Body          |
| 6 Extractor Pin             | 33 Magazine Bottom        |
| 7 Front Sight               | 34 Feeder Platform        |
| 8 Front Sight Nut           | 35 Magazine Spring        |
| 9 Barrel                    | 36 Magazine Bottom Holder |
| 10 Catch Slide              | 37 Trigger                |
| 11 Extractor                | 38 Disconnecter Pin       |
| 12 Extractor Spring         | 39 Disconnecter           |
| 13 Firing Pin               | 40 Release Piece          |
| 14 Firing Pin Spring        | 41 Release Piece Screw    |
| 15 Recoil Spring            | 42 Trigger Spring         |
| 16 Firing Pin Safety        | 43 Trigger Spring Pin     |
| 17 Firing Pin Safety Top    | 44 Hammer                 |
| 18 Firing Pin Safety Spring | 45 Cocking Piece          |
| 19 Catch Slide Spring       | 46 Hammer Spring Guide    |
| 20 Frame                    | 47 Hammer Spring          |
| 21 Ejector Pin              | 48 Magazine Catch         |
| 22 Hammer Pin               | 49 Magazine Button        |
| 23 Cocking Piece Pin        | 50 Magazine Catch Spring  |
| 24 Barrel Pin               | 51 Magazine Catch Screw   |
| 25 Ejector                  | 52 Trigger Safety         |
| 26 Ejector Bush             | 53 Safety Button          |
| 27 Magazine Safety          | 54 Grip Plate Right       |
|                             | 55 Grip Plate Left        |
|                             | 56 Grip Screws            |