



BROWNING®

The Best There Is.

OWNER'S MANUAL

VERY IMPORTANT:

Save This Booklet. Carefully read this entire manual before using your new Browning firearm.

MODEL 1885 SINGLE SHOT RIFLE

NEW GUN OWNERS RECORD

KEEP THIS RECORD FOR FUTURE REFERENCE

Browning Model

Serial Number

Gauge / Caliber

Purchase Price

Purchased From

Date of Purchase

We are pleased that you have chosen a Browning Model 1885 single shot rifle.

The Browning Model 1885 Single Shot is patterned after the original single shot rifle invented by John M. Browning in 1878. He was only 23 years old when he produced this classic falling-block type action rifle. He sold the sales rights to Winchester in 1883 and it later gained great popularity when it was produced as the Winchester Single Shot Model 1885 High Wall. The original Low Wall Single Shot (introduced later) was referred to as the "thinside" and was traditionally used as a carbine. The original 1885s were designed for use with black powder cartridges, as is the 1885 BPCR model. With a reasonable amount of care, your Model 1885 should give you many years of dependable, enjoyable service. Please feel free to write us immediately if you have any observations regarding its performance and operation.

Special Note for Model 1885 BPCR: In addition to the regular instructions in this manual, be sure you refer to the special instructions starting on page 12 of this manual for special information and warnings regarding the Model 1885 BPCR model.



One Browning Place, Morgan, Utah 84050-9326

Distributed in Canada by Browning Canada Sports Ltd./Ltee, St-Laurent, Quebec H4S 1W6

Printed in Japan. 98105

This manual covers the following versions of the Model 1885:

- 1885 HIGH WALL •
- 1885 LOW WALL •
- 1885 BPCR (BLACK POWDER CARTRIDGE RIFLE) •

MODEL 1885 SINGLE SHOT RIFLE

You Are Responsible For Firearms Safety

As a gun owner, you accept a set of demanding responsibilities. How seriously you take these responsibilities can be the difference between life and death.

There is no excuse for careless or abusive handling of any firearm. At all times handle your rifle and any other firearm with intense respect for its power and potential danger.

PLEASE READ AND UNDERSTAND ALL OF THE CAUTIONS, PROPER HANDLING PROCEDURES AND INSTRUCTIONS OUTLINED IN THIS BOOKLET BEFORE USING YOUR NEW FIREARM.

- 1 **ALWAYS KEEP THE MUZZLE OF YOUR RIFLE POINTED IN A SAFE DIRECTION, EVEN THOUGH YOU ARE CERTAIN THE RIFLE IS UNLOADED.**

NEVER POINT ANY FIREARM AT ANYTHING YOU DO NOT INTEND TO SHOOT. BE EXTREMELY ALERT AND AWARE OF ALL PERSONS AND PROPERTY WITHIN THE RANGE OF YOUR AMMUNITION.

- 2 **NEVER RELY TOTALLY ON YOUR RIFLE'S "SAFETY" DEVICE.**

You should never trust the 1885's half-cock hammer position to function as a "safety." See "Operation of the Hammer" later in this manual.

No guarantee can be made that at some time, the half-cock notch will not prevent the hammer from striking the firing pin. Like any mechanical device it can sometimes fail and can be jarred or inadvertently manipulated into an unsafe condition.

While it is a good idea to practice and become familiar with the operation of the hammer safety, **NEVER TEST IT WHILE YOUR RIFLE IS LOADED OR POINTED IN AN UNSAFE DIRECTION.**

Your Model 1885's half-cock notch is merely an aid to safe gun handling and is no excuse for pointing the muzzle in an unsafe direction.

Always treat this rifle as though it were loaded and ready to fire.

- 3 **THE USE OF A HAMMER SPUR (EXTENSION) ON THE 1885 IS NOT RECOMMENDED.**

A hammer spur (extension) can result in malfunction and possibly create a hazardous condition.

- 4 **WHENEVER YOU HANDLE A FIREARM, OR HAND IT TO SOMEONE, ALWAYS OPEN THE ACTION IMMEDIATELY AND VISUALLY CHECK YOUR RIFLE'S CHAMBER.**

Make certain that it does not inadvertently contain any ammunition. Always keep the chamber empty and the hammer in the half cock position unless shooting is imminent.

- 5 **DO NOT TRANSPORT YOUR RIFLE LOADED, WHETHER IN A SCABBARD, GUN CASE, OR OTHER CONTAINER.**

When the 1885 is stored or cased, the hammer should always be placed in the half-cock position.

- 6 **HUNTING FROM ELEVATED SURFACES SUCH AS TREE STANDS IS DANGEROUS.**

Doing so may increase the risk of handling a firearm. The following rules should always be observed by you and those you hunt with: *Always* make certain that the stand being used is safe and stable. *Always* make certain that your firearm is unloaded when it is being taken up and down from the stand. *Always* make certain that your firearm is not dropped from the stand, or dropped while it is being taken up or down from the stand. *Remember*, a loaded firearm may discharge when dropped, even with the hammer in the half cock position.

- 7 **BEWARE OF BARREL OBSTRUCTIONS, FOR THE SAFETY OF BOTH YOUR GUN AND YOURSELF.**

Mud, snow, and an infinite variety of other objects may inadvertently lodge in a barrel bore. It takes only one small obstruction to cause dangerously increased pressures that can ruin (swell or rupture) the finest rifle barrels.

BEFORE CHECKING FOR A BARREL OBSTRUCTION, BE CERTAIN NO LIVE ROUND IS IN THE CHAMBER.

Look through the barrel to be sure it is clear of any obstruction. If an obstruction is seen, no matter how small it may be, clean the bore with a cleaning rod and patch as described in "Cleaning Suggestions" later in this manual. Before the first firing, clean the bore with a cleaning rod and patch, and wipe away any anti-rust compounds in the action/chamber areas.

- 8 **ALWAYS UNLOAD YOUR RIFLE WHEN NOT IN USE. REFER TO THE SECTION OF THIS INSTRUCTION BOOKLET EXPLAINING THE UNLOADING OF YOUR RIFLE.**

Store your gun and ammunition separately—well beyond the reach of children. Take all safeguards to ensure your rifle does not become available to untrained, inexperienced or unwelcome hands.

- 9 **USE THE PROPER AMMUNITION.**

The barrel and action of this rifle have been made with substantial safety margins over the pressures developed by established American commercial loads. Nevertheless, Browning assumes no liability for incidents which occur through the use of cartridges of nonstandard dimensions which develop pressures in excess of commercially available ammunition which has been loaded in accordance with standards established by the Sporting Arms and Ammunition Manufacturers' Institute (SAAMI).

When loading/shooting black powder or Pyrodex® cartridge loads in the BPCR version of the Model 1885 you must refer to and understand the special warnings and instructions found near the end of this manual.

BE ALERT TO THE SIGNS OF AMMUNITION MALFUNCTION.

If you detect an off sound or light recoil when a cartridge is fired, **DO NOT LOAD ANOTHER CARTRIDGE INTO THE CHAMBER.** Open the action and remove the cartridge from chamber. Glance down the barrel to make sure that an obstruction does not remain in the barrel. If there is an

obstruction, completely clear the barrel before loading and firing again. Failure to follow these instructions can cause extensive damage to your gun and possible serious injury to yourself and others.

- 10 **DISCHARGING FIREARMS IN POORLY VENTILATED AREAS, CLEANING FIREARMS, OR HANDLING AMMUNITION MAY RESULT IN EXPOSURE TO LEAD AND OTHER SUBSTANCES KNOWN TO CAUSE BIRTH DEFECTS, REPRODUCTIVE HARM AND OTHER SERIOUS PHYSICAL INJURY. HAVE ADEQUATE VENTILATION AT ALL TIMES. WASH HANDS THOROUGHLY AFTER EXPOSURE.**

- 11 **DO NOT SNAP THE FIRING PIN ON AN EMPTY CHAMBER — THE CHAMBER MAY NOT BE EMPTY!**

Treat every gun with the respect due a loaded gun, even though you are certain the gun is unloaded.

- 12 **KEEP YOUR FINGERS AWAY FROM THE TRIGGER WHILE UNLOADING AND LOADING, UNTIL YOU ARE READY TO SHOOT.**

- 13 **BE SURE OF YOUR TARGET AND BACKSTOP.**

Particularly during low light periods. Know the range of your ammunition. Never shoot at water or hard objects.

- 14 **ALWAYS UNLOAD YOUR RIFLE'S CHAMBER BEFORE CROSSING A FENCE, CLIMBING A TREE, JUMPING A DITCH OR NEGOTIATING OTHER OBSTACLES.**

Refer to "General Operating Procedures" later in this manual for instructions on the unloading of your rifle. Never place your loaded rifle on or against a fence, tree, car, or other similar object.

- 15 **WEAR EYE AND EAR PROTECTION WHEN SHOOTING.**

Unprotected, repeated exposure to gunfire can cause hearing damage. Wear ear protectors (shooting ear plugs or muffs) to guard against such damage. Wear shooting glasses to protect your eyes from flying particles. Allow proper distance (eye relief) between the scope and your eye when firing a scoped rifle or shotgun. Always keep a safe distance between the muzzle of your firearm and any persons nearby, as muzzle blast, debris and ejecting

shells could inflict serious injury. Also, wear eye protection when disassembling and cleaning your shotgun to prevent the possibility of springs, spring-tensioned parts, solvents or other agents from contacting your eyes.

16 DROPPING A LOADED GUN CAN CAUSE AN ACCIDENTAL DISCHARGE

Even with the hammer in the half-cock position. Be extremely careful while hunting or during any shooting activity, to avoid dropping any firearm.

17 IF YOUR RIFLE FAILS TO FIRE, KEEP THE MUZZLE POINTED IN A SAFE DIRECTION.

Hold this position for a minimum of 30 seconds. Carefully open the action and remove the cartridge. If the primer is indented, the cartridge should be disposed of in a way that cannot cause harm. If the primer is not indented, your firearm should be examined by a qualified gunsmith and the cause of the malfunction should be corrected before further use.

18 BE DEFENSIVE AND ON GUARD AGAINST

UNSAFE GUN HANDLING AROUND YOU AND OTHERS.

Don't be timid when it comes to gun safety. If you observe other shooters violating any of these safety precautions, politely suggest safer handling practices.

19 BE CERTAIN YOUR RIFLE IS UNLOADED BEFORE CLEANING.

Because so many gun accidents occur when a firearm is being cleaned, special and extreme care should be taken to be sure your gun is unloaded before disassembly, cleaning and reassembly. Keep ammunition away from the cleaning location. Never test the mechanical function of any firearm with live ammunition.

20 TEACH AND SUPERVISE FIREARMS SAFETY TO ALL MEMBERS OF YOUR FAMILY — ESPECIALLY TO CHILDREN AND NONSHOOTERS.

Closely supervise newcomers to the shooting sports. Encourage enrollment in hunting/shooting safety courses.

21 NEVER DRINK ALCOHOLIC BEVERAGES OR TAKE ANY TYPE OF DRUGS BEFORE OR DURING SHOOTING.

Your vision and judgment could be dangerously impaired, making your gun handling unsafe to you and to others.

22 PERFORM PERIODIC MAINTENANCE — AVOID UNAUTHORIZED SERVICING.

Your rifle is a mechanical device which will not last forever, and as such, is subject to wear and requires periodic inspection, adjustment, and service. Browning firearms should be serviced by a Browning Recommended Service Center or by Browning's service facility in Arnold, Missouri. Browning cannot assume any responsibility for injuries suffered or caused by unauthorized servicing, alterations or modifications of Browning firearms.

23 READ AND HEED ALL WARNINGS IN THIS INSTRUCTION BOOK, ON AMMUNITION BOXES AND WITH ALL ACCESSORIES THAT YOU INSTALL ON YOUR FIREARM.

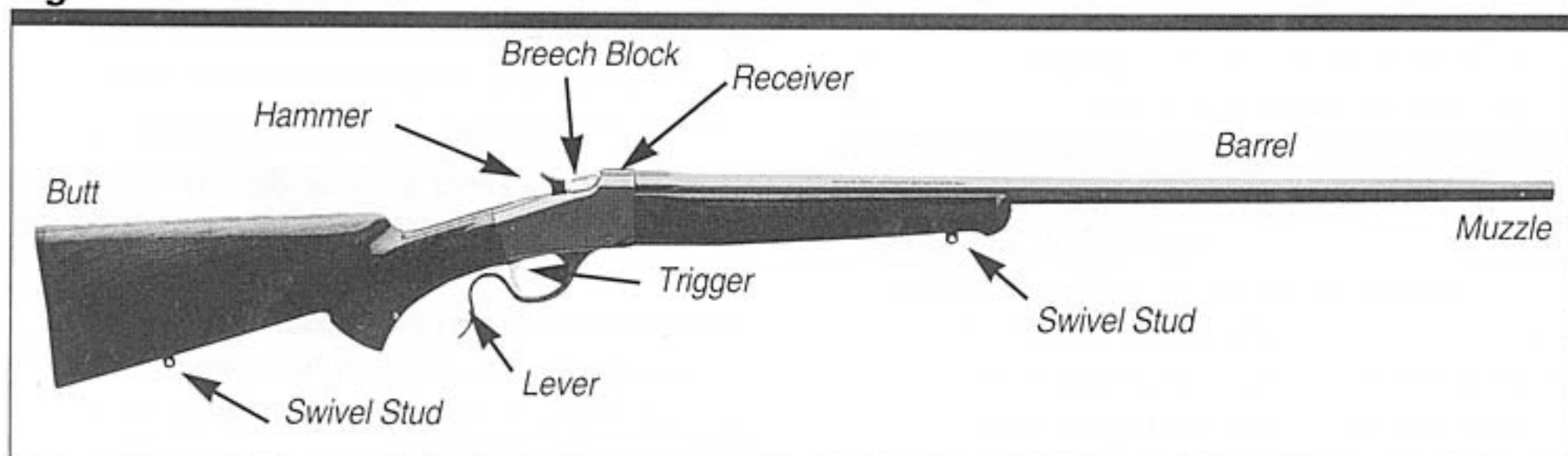
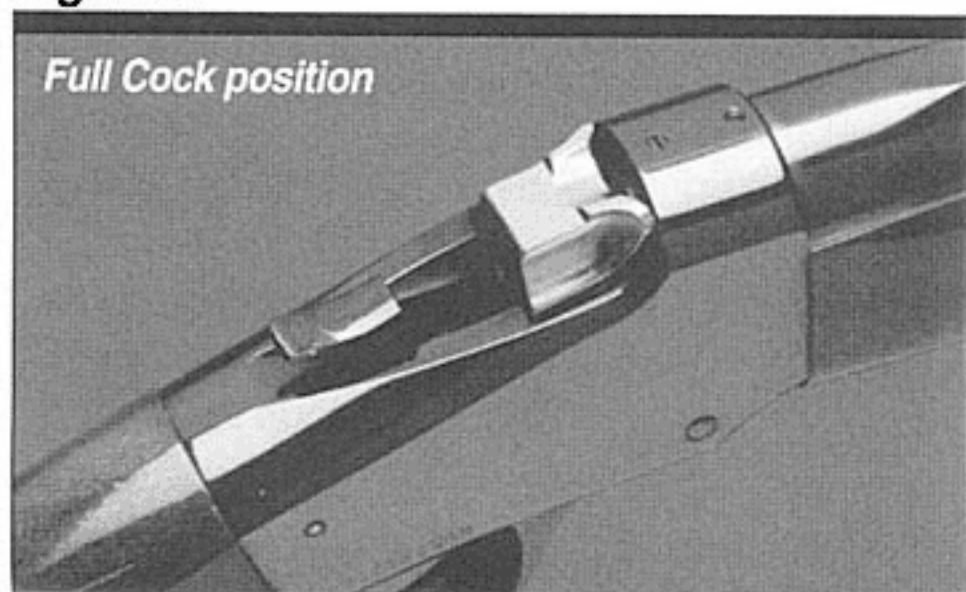
It is your responsibility to secure the most up-to-date information on the safe handling procedures of your Browning gun. Browning assumes no liability for incidents which occur when unsafe or improper gun accessories or ammunition combinations are used.

24 BROWNING RESERVES THE RIGHT TO REFUSE SERVICE ON FIREARMS THAT HAVE BEEN ALTERED, ADDED TO OR SUBSTANTIALLY CHANGED.

Removal of metal from barrel(s), or modifications of the firing mechanism and/or operating parts may lead to Browning's refusal of service on such firearms. Browning will charge the owner for parts and labor to return the firearm to original Browning specifications.

DO NOT, UNDER ANY CIRCUMSTANCES, ALTER THE TRIGGER, SAFETY OR PARTS OF THE FIRING MECHANISM OF THIS OR ANY OTHER FIREARM. FAILURE TO OBEY THIS WARNING MAY RESULT IN INJURY OR DEATH TO YOURSELF OR OTHERS.

BE CAREFUL!

Figure 1**Figure 2**

Nomenclature

In conventional gun terminology the position and movement of gun parts are described as they occur with the gun horizontal and in the normal firing position; i.e., the muzzle is forward or front; the butt stock is rearward or rear; the trigger is downward or underneath; the sights are upward or on top. For general nomenclature, see figure 1.

Serial Number

The serial number can be found on the lower right side of the receiver toward the rear corner. Record it at the space provided at the front of the manual for future reference.

Initial Cleaning

BEFORE THE FIRST FIRING, CLEAN THE ANTI-RUST COMPOUND from the inside of the barrel and receiver with a clean rag and light gun oil such as Browning Oil. See "Cleaning Suggestions" section.

General Description

All three versions of the Model 1885 function in essentially the same way. Please note the following:

- Only the high wall version has the shell deflector feature. This feature is discussed later.
- If your rifle is the BPCR version it is very important that you review the special procedures for cleaning and maintenance that are necessary when shooting black powder.

Please also note that most of the descriptive photos in this manual are of the low wall version of the Model 1885 Single Shot rifle. Although there are design and significant part differences, the basic function and operation is the same for all three versions.

Operation of the Hammer

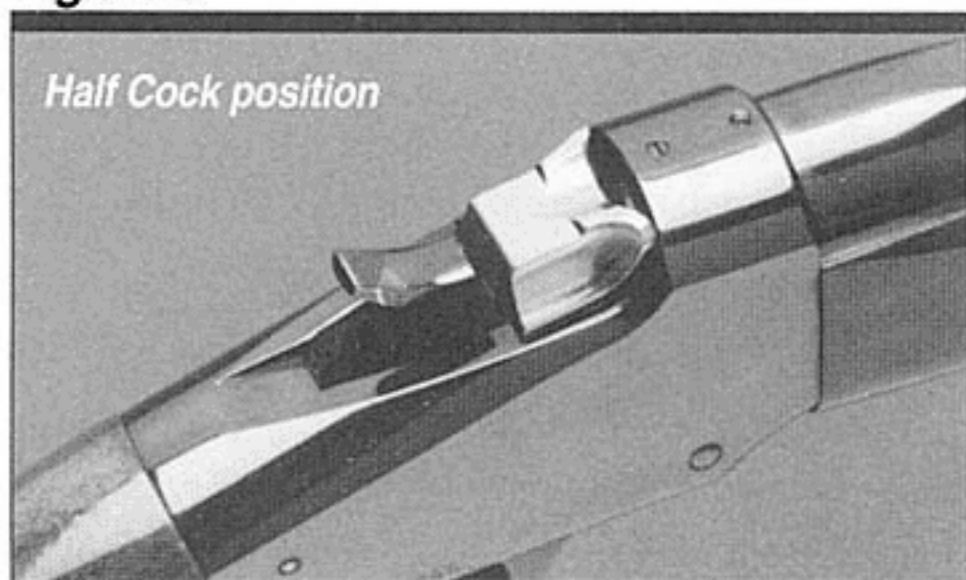
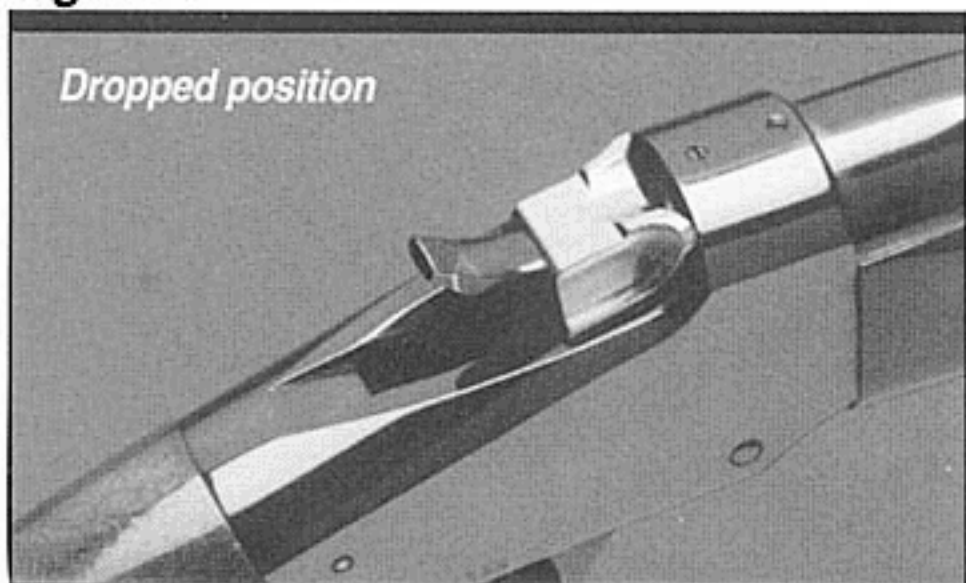
Like most lever action rifles with exposed hammers, the Browning 1885 does not have a separate manual safety. The exposed hammer is an excellent indicator of the status of the rifle.

The hammer has three positions: full-cock, half-cock, and dropped or fired.

FULL-COCK POSITION —

The hammer is all the way to the rear (see figure 2). At this point, any pull or tug on the trigger will force the hammer to fall, firing the rifle.

The hammer can be placed in this position in either of two ways. First, every time the lever is cycled, lever linkages will leave the hammer in the full-cock position. The hammer may also be placed at full-cock by manually moving it rearward with the thumb until it

Figure 3**Figure 4**

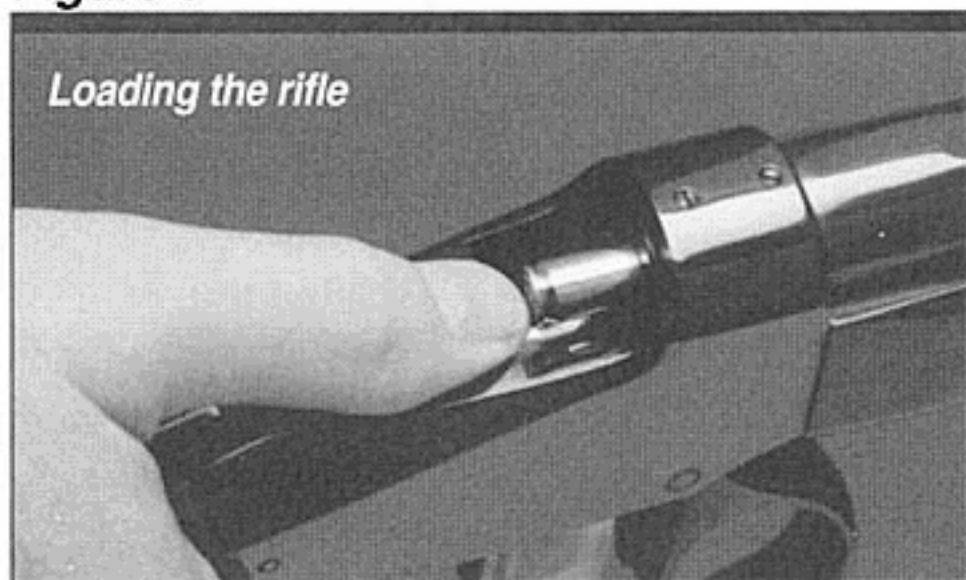
engages the full-cock notch. Be sure to keep your finger off the trigger while cocking the hammer.

HALF-COCK POSITION —

The half-cock notch on the hammer is a safety feature designed to protect against accidental discharge of the rifle in the event the hammer slips from the thumb while the rifle is being cocked (see figure 3). The half-cock hammer position should be used for handling and storage — any time that the rifle is not actually being fired.

It is important to note that the Model 1885 has an inertia sear which prevents the hammer from going to the dropped position unless the trigger is pulled.

Always make certain when lowering the hammer from full-cock to the half-cock position that your thumb is securely and squarely on the hammer and that the rifle is pointed in a safe direction. A wise practice to follow is to place the thumb extended over the hammer with the point of the thumb just over the “V” between the hammer and the firing pin so that the thumb can act as a cushion against accidental hammer fall, and at the same time, ease the hammer into the half-cock notch.

Figure 5

A little practice with an empty rifle will enable a person to become adept at using the thumb in this manner. Pull the hammer slightly rearward and with the thumb still controlling the hammer, squeeze the trigger and allow the hammer to slowly begin forward travel under the control of your thumb. When the hammer has passed the full-cock position, immediately remove your finger from the trigger. Carefully lower the hammer until it catches on the half-cock position.

DROPPED OR FIRED POSITION —

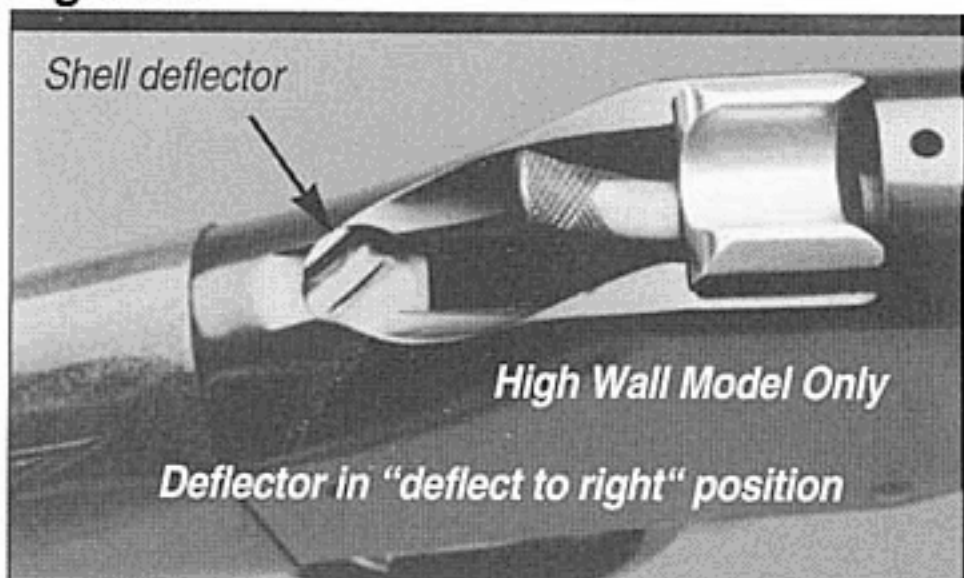
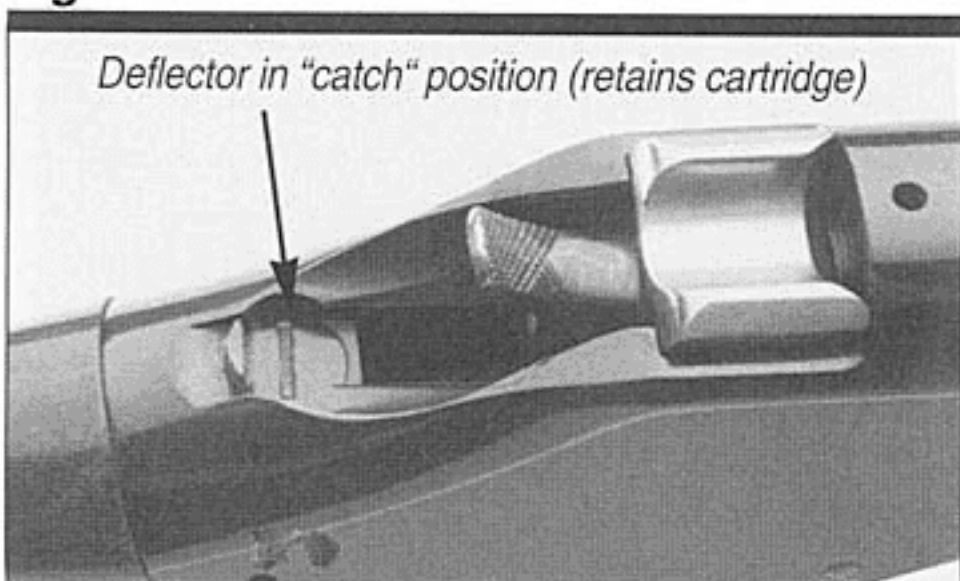
The dropped-hammer position is the position of the hammer after a round is fired. (See figure 4.)

General Operating Procedures

With a cartridge in the chamber, and the hammer at full-cock, the rifle will fire a single round when the trigger is squeezed. The lever is then rotated downward, extracting the fired shell. An unfired shell may now be placed in the chamber. The hammer remains in the full-cock position as the lever is closed, readying the rifle for firing another round.

LOADING AND FIRING—

To load your Model 1885 swing the lever down and fully forward to lower the breech block. Manually insert a cartridge into the chamber (see figure 5). The cartridge should be inserted fully into the chamber to prevent interference with the bolt as it is closed. The top front surface of the bolt is channeled to help load a cartridge protruding slightly from the chamber, but it is best to develop a habit of pushing the cartridge all the way into the chamber. Now close the lever. This locks the action and leaves the hammer in the full-cock, ready-to-fire position.

Figure 6**Figure 7****PUTTING THE HAMMER ON HALF-COCK—**

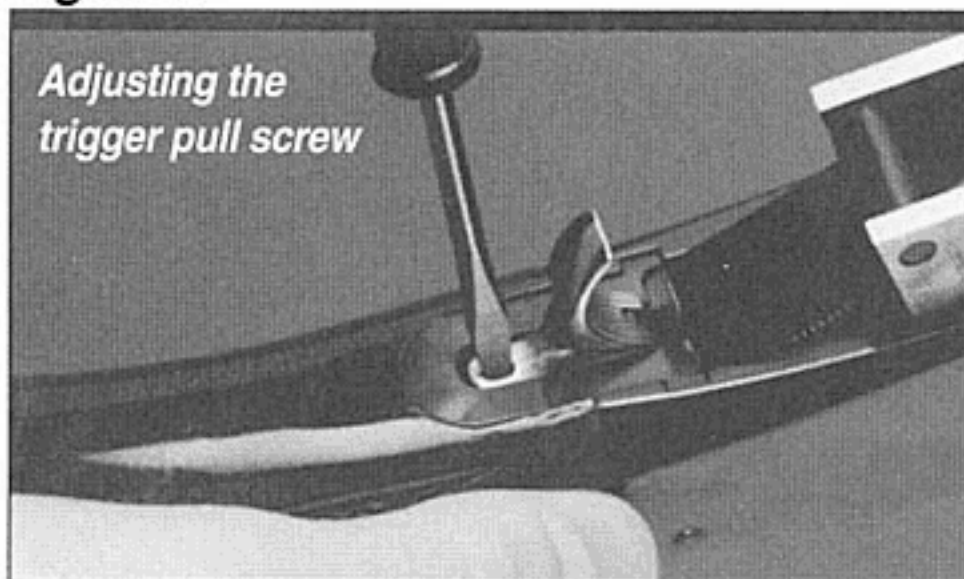
After loading the rifle, when shooting is not imminent, the correct position of the hammer is at half-cock, as pictured in Figure 3 (see "Operation of Hammer" section for correct procedure). When the hammer is in the half-cock position, you need only thumb the hammer back to the full-cock position to prepare the rifle for firing.

UNLOADING —

After firing, or in order to remove a cartridge, swing the lever down. As the lever swings forward the breechblock and the hammer move down in the receiver. At the end of the lever cycle, the cartridge is extracted.

SHELL DEFLECTOR: HIGH WALL MODEL ONLY —

The ejector on High Wall models ejects the fired cartridge clear of the chamber at the end of the lever cycle. As a shell is ejected, it will strike the shell deflector which is at the back of the receiver, behind the hammer. The angle of deflection is adjustable. With a screwdriver, rotate the deflector to one of the click

Figure 8

stop positions. The deflector may be set in a diagonal position to the left or right, deflecting the shell to the left or right respectively, and clearing the stock (see figure 6). The deflector can be positioned straight across to the rear, catching the shell at the base and stopping it in the receiver so that it can be easily removed (see figure 7).

Scope Mount / Sights

All calibers are drilled and tapped for scope mounts. See your Browning dealer to purchase the scope

mount base and rings appropriate for your Model 1885. The High Wall in 45-70 Govt. is supplied with open sights standard. The BPCR is supplied with special sights ready for BPCR metallic silhouette competition. This includes a Vernier rear sight and a globe front sight. Special instructions for BPCR sights are later in this manual.

Trigger

The trigger of the Browning Model 1885 is adjusted at the factory. The trigger pull can be adjusted in a range of approximately 3 1/2 pounds to over 5 pounds by using a small screwdriver (see figure 8). Clockwise rotation decreases the pull weight to a minimum of approximately 3 1/2 pounds. Counterclockwise rotation increases the trigger pull to a maximum of approximately 5 pounds. If the trigger pull force adjustment is increased too far, the trigger system becomes inoperative. Should this happen, merely back off the adjustment until the mechanism is again operative.

WARNING:

NEVER TAMPER WITH THE TRIGGER PULL ADJUSTMENT MECHANISM IN ORDER TO ALTER THE MINIMUM SETTING OF THIS OR ANY OTHER FIREARM'S TRIGGER PULL.

NEVER ATTEMPT IN ANY WAY TO MODIFY OR ALTER SEAR ENGAGEMENT OR ANY OTHER TRIGGER ASSEMBLY COMPONENT.

Swivels

Browning Model 1885 High Wall and Low wall versions are equipped with a set of Michaels-style swivel posts. Swivels and slings are available separately from Browning. Because of its specialized use the BPCR is not provided with swivel posts.

Cleaning Suggestions /High Wall and Low Wall versions

The rifle will function better and more reliably over a longer period of time if it is properly maintained and kept clean.

BEFORE PERFORMING ANY CLEANING BE CERTAIN THE RIFLE IS UNLOADED AND THE LEVER IS IN THE OPEN, OR DOWN POSITION.

You should clean your Model 1885 after every day of shooting, and more often if it becomes excessively dirty. A minimum cleaning includes wiping down the action and oiling key parts. Most regular maintenance will also include cleaning the barrel. If you encounter a function problem (tight action when closing, etc.) be sure to give your gun a thorough cleaning, to see if it solves the problem, before seeking the services of a Browning Recommended Service Center or the Browning Service Facility in Arnold, Missouri, or a competent gunsmith.

A light cleaning means oiling and wiping down. A full cleaning requires that you clean the barrel and action. To clean your firearm follow the general outline below:

CLEANING PROCEDURES —

BE CERTAIN YOUR GUN'S CHAMBER IS UNLOADED. ALWAYS WEAR PROTECTIVE SAFETY GLASSES DURING ALL CLEANING PROCEDURES. KEEP AMMUNITION AWAY FROM THE CLEANING AREA. DO NOT TEST THE FUNCTION OF YOUR FIREARM WITH LIVE AMMUNITION.

- 1 Use a cleaning rod with a tip and patch large enough for a snug fit in the bore.

Insert the rod and patch into the barrel at the breech end and run it back and forth several times.

CAUTION SHOULD BE EXERCISED TO ENSURE THAT THE CLEANING ROD OR HANDLE DOES NOT STRIKE THE CROWN OF THE MUZZLE, AS DAMAGE TO THIS AREA CAN ADVERSELY AFFECT THE ACCURACY OF THE RIFLE.

- 2 Inspect the chamber and bore for powder fouling. A normal amount of powder residue can be expected and is not serious. It can usually be removed by repeating Step 1, using a patch saturated with nitro solvent. If or when fouling should

become heavy, it can be removed with a brass bore brush. Dip or spray the brush with nitro solvent and scrub the chamber and bore until the fouling is removed. To prevent brass bristles from breaking off, the brush should be pushed completely through bore before being withdrawn.

- 3 To maintain the utmost accuracy of your rifle it is recommended you clean the bore with a copper solvent.

Modern cartridge jackets are made mainly of copper and zinc. Residues from copper and zinc stick to the barrel and require more frequent cleaning. Swab the bore of your rifle with a good copper solvent using the manufacturers recommended procedure.

- 4 After fouling has been removed, the bore should be wiped dry. Then, pass a slightly oiled patch through the bore, for preservation. A fine, light oil like Browning oil is recommended.

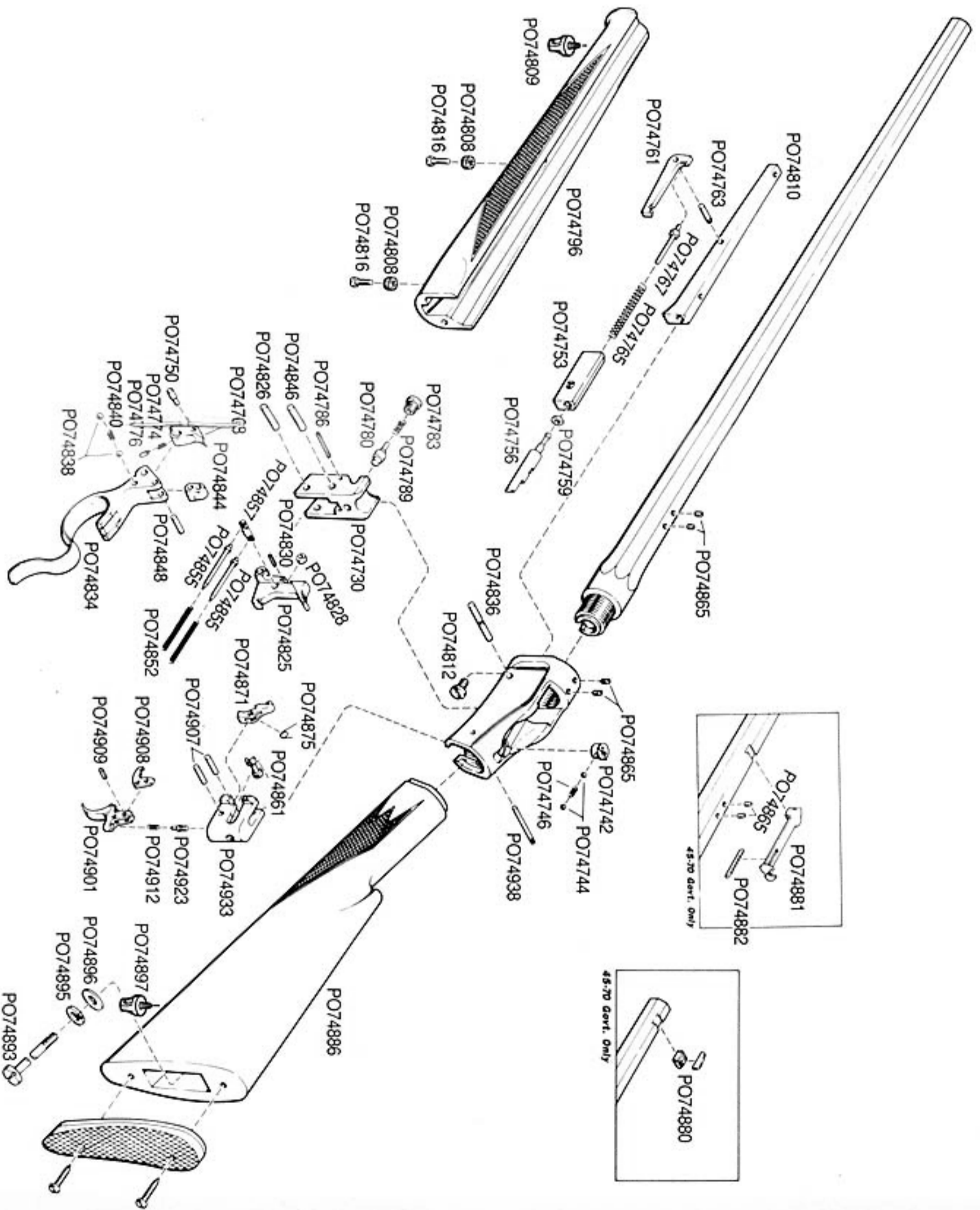
Model 1885 "High Wall" Single Shot Rifle

Schematic is provided for parts identification only and should not be used as a guide to assemble the rifle.

IMPORTANT: When ordering parts, list part number, caliber, model and serial number.

CAUTION: Browning parts are made exclusively for Browning guns and should not be used in other guns even though models may be similar. Inadequately fitted parts may be dangerous.

Shown is the Model 1885 High Wall.



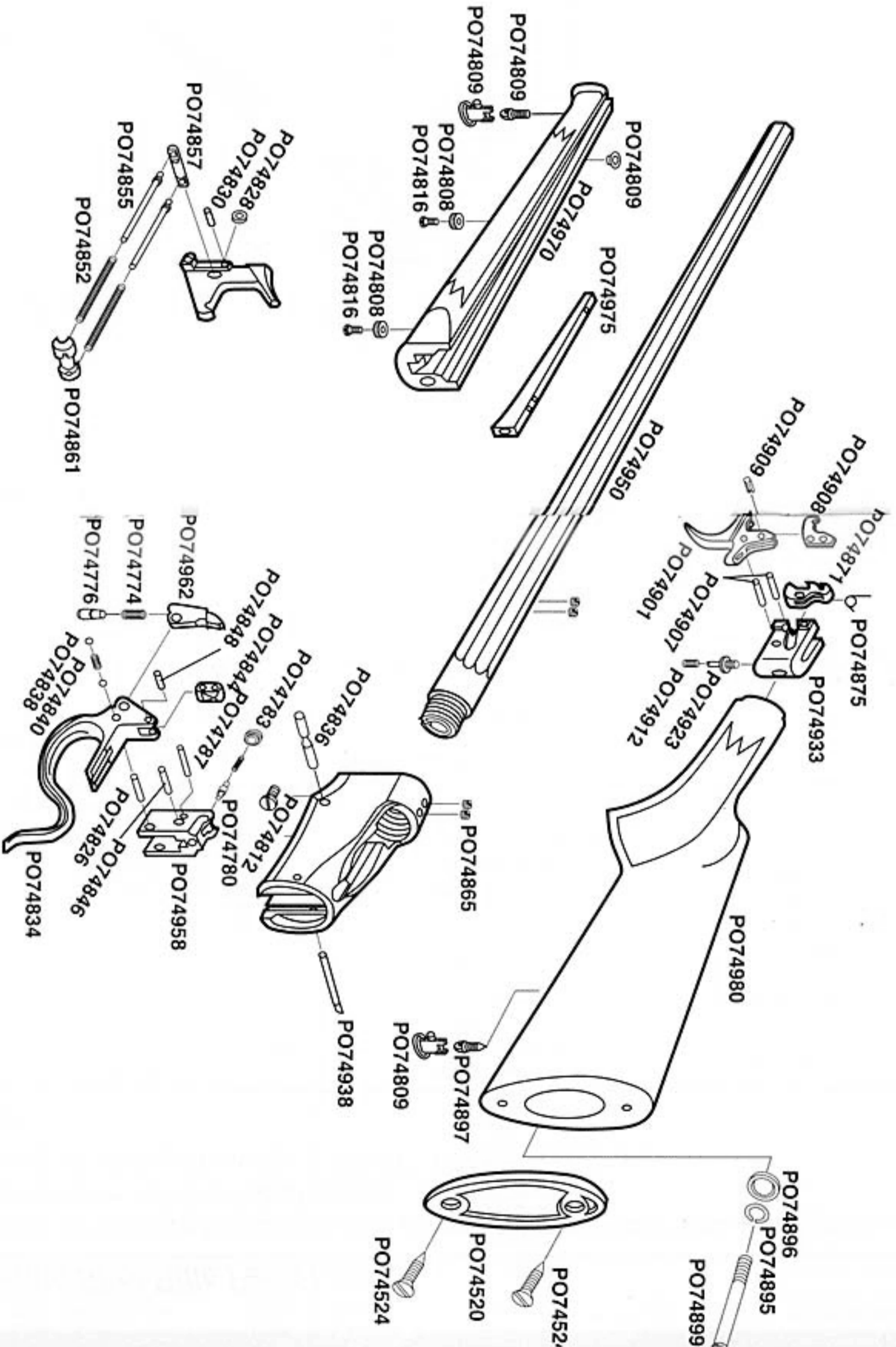
Model 1885 "Low Wall" Single Shot Rifle

Schematic is provided for parts identification only and should not be used as a guide to assemble the rifle.

IMPORTANT: When ordering parts, list part number, caliber, model and serial number.

CAUTION: Browning parts are made exclusively for Browning guns and should not be used in other guns even though models may be similar. Inadequately fitted parts may be dangerous.

Shown is the Model 1885 Low Wall.



Not shown: Model 1885 BPCR. Call or write the Browning parts department for a schematic.

Model 1885 Single Shot Rifle Parts Lists

These parts lists refers to the Browning Model 1885 single shot rifle only. Important: When ordering parts, list model, part number, part name, caliber and serial number.

Order parts by fax using our toll-free fax number: 1-800-817-4755.

1885 High Wall

Part No. Name	Part No. Name	Part No. Name	Part No. Name
P074702 Barrel w/Receiver 22-250 Rem.	P074773 Extractor 7mm Rem. Mag.	P074838 Lever Latch Ball	P074901 Trigger
P074703 Barrel w/Receiver 223 Rem.	P074775 Extractor 45-70 Govt.	P074840 Lever Latch Ball Spring	P074907 Trigger Pin and/or Sear Pin
P074708 Barrel w/Receiver 30-06	P074774 Extractor Spring	P074844 Link	P074908 Trigger Sear
P074712 Barrel w/Receiver .270 Win.	P074776 Extractor Spring Plunger	P074846 Link Breech Block Pin	P074909 Trigger Sear Pin
P074723 Barrel w/Receiver 7mm Rem. Mag.	P074780 Firing Pin	P074848 Link Lever Pin	P074912 Trigger Spring
P074727 Barrel w/Receiver 45-70 Govt.	P074783 Firing Pin Bushing	P074852 Mainspring	P074923 Trigger Pull Adjusting Screw
P074730 Breech Block	P074787 Firing Pin Bushing Pin	P074855 Mainspring Guide	P074933 Trigger Housing
P074742 Deflector	P074789 Firing Pin Spring	P074857 Mainspring Pin	P074938 Trigger Housing Pin
P074744 Deflector Ball	P074796 Forearm	P074861 Mainspring Pin Rear	
P074746 Deflector Ball Spring	P074808 Forearm Escutcheon	P074865 Scope Mount Filler Screws	
P074750 Ejector Connecting Pin	P074809 Forearm Swivel Base	P074871 Sear	
P074753 Ejector Hammer	P740810 Forearm Hanger	P074875 Sear Spring	
P074756 Ejector Hammer Extension	P074812 Forearm Hanger Bolt	P074880 Sight Front 45-70 Govt.	
P074759 Ejector Hammer Extension Washer	P074816 Forearm Screw	P074881 Sight Rear 45-70 Govt.	
P074761 Ejector Hammer Sear	P074825 Hammer	P074882 Sight Step Rear 45-70 Govt.	
P074763 Ejector Hammer Sear Pin	P074826 Hammer Pin	P074886 Stock	
P074765 Ejector Hammer Spring	P074828 Hammer Roller	P074893 Stock Bolt Long	
P074767 Ejector Hammer Spring Guide	P074830 Hammer Roller Rivet	P074895 Stock Bolt Spring Washer	
P074769 Extractor 223 Rem.	P074834 Lever	P074896 Stock Bolt Washer	
P074768 Extractor 270 Win., 30-06, 22-250	P074836 Lever Pin	P074897 Swivel Eyelet	

* Indicates part must be fitted by Browning Service Department or qualified gunsmith.
† Part must be purchased only by holders of current, valid Federal Firearms License.

1885 Low Wall

Part No. Name	Part No. Name	Part No. Name	Part No. Name
P074950 Barrel W-Rec .22 Hornet 1885 L. W. Only	P074787 Firing Pin Bushing Pin 1885	P074838 Lever Latch Ball 1885	P074980 Stock 1885 Low Wall Only
P074952 Barrel w/Rec .223 1885 Low Wall Only	P074789 Firing Pin Spring 1885	P074840 Lever Latch Ball Spring 1885	P074893 Stock Bolt 1885
P074954 Barrel w/Rec .243W 1885 Low Wall Only	P074970 Forearm 1885 Low Wall Only	P074836 Lever Pin 1885	P074895 Stock Bolt Spring Washer 1885
P074958 Breech Block 1885 Low Wall Only	P074808 Forearm Escutcheon 1885	P074844 Link 1885	P074896 Stock Bolt Washer 1885
P064520 Butt Plate BL-22 & 1885 Low Wall	P074975 Forearm Hanger 1885 Low Wall Only	P074846 Link Breech Block Pin 1885	P074897 Stock Swivel Eyelet 1885
P064524 Butt Plate Screw BL-22 & 1885 Low Wall	P074812 Forearm Hanger Bolt 1885	P074848 Link Lever Pin 1885	P074901 Trigger 1885
P074962 Extractor .22 Hornet 1885 Low Wall Only	P074816 Forearm Screw 1885	P074852 Mainspring 1885	P074933 Trigger Housing 1885
P074964 Extractor .223 1885 Low Wall Only	P074809 Forearm Swivel Eyelet & Nut 1885	P074855 Mainspring Guide 1885	P074938 Trigger Housing Pin 1885
P074966 Extractor .243W 1885 Low Wall Only	P074825 Hammer 1885	P074857 Mainspring Pin Front 1885	P074907 Trigger Pin/Sear Pin 1885
P074774 Extractor Spring 1885	P074826 Hammer Pin 1885	P074861 Mainspring Pin Rear 1885	P074923 Trigger Pull Adjusting Screw 1885
P074776 Extractor Spring Plunger 1885	P074828 Hammer Roller 1885	P074865 Scope Mount Filler Screw 1885	P074908 Trigger Sear 1885
P074780 Firing Pin 1885	P074830 Hammer Roller Rivet 1885	P074871 Sear 1885	P074909 Trigger Sear Pin 1885
P074783 Firing Pin Bushing 1885	P074834 Lever 1885	P074875 Sear spring 1885	P074912 Trigger Spring 1885

1885 BPCR

Part No. Name	Part No. Name	Part No. Name	Part No. Name	Part No. Name
P074951 Barrel/Receiver (40-65)	P074830 Hammer Roller Pin	P074934 Trigger Housing	P074896 Stock Bolt Washer	P074697 Sight Base Rear
P074953 Barrel/Receiver (45-70)	P074857 Main Spring Pin (Front)	P074912 Trigger Spring	P074895 Stock Bolt Spring Washer	P074696 Sight Windage Base MT Screw
P074676 Front Sight Assy	P074861 Main Spring Pin (Rear)	P074923 Trigger Pull Adjusting Screw	P074893 Stock Bolt	P074694 Sight Windage Screw Rear
P074982 Receiver Tang Screw	P074855 Main Spring Guide	P074903 Trigger	P074734 Butt Plate	P074693 Sight Windage Base Rear
P074984 Receiver Tang Screw Nut	P074852 Main Spring	P074908 Trigger Sear	P066925 Butt Plate Screw	P074691 Sight Windage Spring Washer
P074975 Forearm Hanger	P074757 Ejector Hammer Extension	P074909 Trigger Sear Pin	P074865 Telescope Mount Filler Screw	P074690 Sight Windage Lock Knob
P074812 Forearm Hanger Bolt	P074834 Lever	P074871 Sear	P074698 Sight Base Screw Rear	P074689 Sight Windage Lock Knob Screw
P074730 Breech Block	P074844 Link	P074907 Sear Pin (Trigger Pin)	P074687 Sight Disc #50	P074688 Sight Rear Ladder Assy.
P074780 Firing Pin	P074848 Link Pin (Lever)	P074875 Sear Spring	P074686 Sight Disc #60	P074684 Sight Elevator Rear
P074789 Firing Pin Spring	P074838 Lever Latch Ball (Deflector Bolt)	P074938 Trigger Housing Pin	P074685 Sight Disc #70	P074683 Sight Elevator Screw Lock Collar
P074783 Firing Bushing	P074840 Lever Latch Ball Spring	P074972 Forearm	P074678 Sight Insert Card Front	P074682 Sight Elevator Screw Assy.
P074787 Firing Bushing Pin	P074775 Extractor (40-65) 45-70	P074808 Forearm Escutcheon	P074699 Sight Vernier Rear	P074681 Sight Front Spirit Tube Cap
P074846 Link Pin (Breech Block)	P074750 Extractor Connecting Pin	P074816 Forearm Screw	P074692 Sight Windage Barrel Spring	P074680 Sight Front Spirit Level Vial
P074825 Hammer	P074774 Extractor Spring	P074887 Stock	P074625 Sight Windage Base Spring O/S	P074697 Sight Body Front
P074826 Hammer Pin (Link Pin)	P074776 Extractor Spring Plunger	P074819 Pistol Grip Cap	P074695 Sight Windage Base Spring Standard	P074677 Sight Nut Fron
P074828 Hammer Roller	P074836 Receiver Pin	P074824 Pistol Grip Cap Screw		

MAKE SURE THERE ARE NO OBSTRUCTIONS, CLEANING PATCHES, OR OTHER OBSTACLES LEFT IN THE BORE.

- 5 The interior of the receiver should be wiped off with a clean rag. Any dried oil in these areas should be removed. Follow this cleaning with a very light film of oil on working parts. Do not pour large quantities of oil onto the action. An excess of oil will run into the wood and cause it to soften or warp.
- 6 Wipe all exposed metal surfaces with an oiled cloth making sure to wipe the rifle clean of all finger marks. Finger marks should be removed because they provide a place where moisture can accumulate. Ordinary good judgment will, of course, indicate that the metal of the gun should receive a light film of oil any time the rifle has been exposed to weather or handling.
- 7 The wood surfaces of your Model 1885 can also be wiped lightly with Browning oil.

You can also apply a quality wood or furniture polish to the stock and forearm. Using one of these methods (not both), will enhance the beauty and durability of your Model 1885.

DISASSEMBLY —

NEVER ATTEMPT TO TAKE YOUR MODEL 1885 APART FURTHER THAN EXPLAINED IN THIS MANUAL.

This is a specialized, finely fitted mechanism. You may permanently mar it by attempting to disassemble the inner mechanism assemblies. If disassembly for service or cleaning is required, take your gun to a Browning recommended Service Center or a competent gunsmith, or send it to our Arnold, Missouri Service Facility as explained under "Service or Repair."

Special / Additional Instructions for Model 1885 BPCR

The Model 1885 BPCR is a special version of the famous Single Shot rifle designed specifically for use in BPCR metallic silhouette competitions. It is designed primarily to shoot black powder or Pyrodex® cartridges in one of two calibers (although shooting smokeless loads in the 45-70 Govt. version is permissible). The BPCR features a classic Vernier rear sight and globe front sight patterned after those found on the finest competition rifles of well over a century ago. The level of precision found in this sight system is extreme, and you will find your BPCR ready for serious competition right out of the box.

The rear Vernier sight has been supplied in a separate box to protect it during shipment. Installation instructions are explained later in this section.

Please remember that because you are shooting cartridges loaded with black powder (or Pyrodex) extra care and attention must be paid to cleaning and care of your rifle — especially the barrel.

WARNING:

IMPORTANT INSTRUCTIONS ABOUT YOUR NEW MODEL 1885 BPCR (BLACK POWDER CARTRIDGE RIFLE).

PLEASE READ ALL OF THE FOLLOWING SPECIAL INSTRUCTIONS AND WARNINGS FOR THE BPCR VERSION OF THE MODEL 1885 VERY CAREFULLY BEFORE USING YOUR NEW RIFLE.

1 **OBTAIN EXPERT INSTRUCTION.**

If you are unfamiliar with hand loading black powder (or Pyrodex) cartridge rifles you must first seek expert instruction. Qualified organizations such as local gun clubs, The National Rifle Association and Hunter Safety Programs are resources for obtaining information from qualified instructors with expertise in black powder cartridge reloading. Ask your Browning dealer for help in locating the appropriate experts/organizations in your area. Refer to the instructions and specifications that are provided with black/Pyrodex powder, bullet molds, bullet lubricants, reloading dies, empty cartridges and other components.

2 **DUPLEX LOADS CAN BE DANGEROUS.**

Shooting a cartridge containing both smokeless and Black Powder (called a duplex load) if incorrectly loaded may cause excessive pressures and could cause damage to your rifle and serious injury or death to the shooter or bystanders. Follow accepted duplex loads procedures completely and

always adhere to the NRA guideline of never exceeding 20% smokeless powder, by weight, as a priming charge or fouling reducer. Consult reliable loading manuals before using any duplex loads.

3 **KNOW YOUR POWDER TYPES.**

Black Powder and Pyrodex are special types of powder. Black Powder is not defined by the color of the powder itself. No smokeless powder — even those which appear black in color — should be loaded in place of actual Black Powder or Pyrodex. Some smokeless powders are black in color making proper identification extremely important. Be sure you know which type and granulation of powder you are loading. When loading cartridges for your Model 1885 never use any powder unless you have seen it poured from the original manufacturer's container which is clearly identified on the label. Use Black Powder or Pyrodex of the type and granulation specified in reliable, published loading information only.

4 **FILL BLACK POWDER CASES COMPLETELY.**

When loading Black Powder or Pyrodex you must make sure that the case is completely full. The exact amount is unimportant. If a case is not filled with powder up to the base of the bullet the bullet may act as a barrel obstruction. This can result in increased pressures and cause a ringed chamber or barrel — and could cause the barrel to burst causing injury or death to the shooter or bystanders.

5 **RESPONSIBILITY FOR SAFETY IS YOURS.**

Successfully loading black powder cartridge rifles involves many different technical skills, a high degree of practical knowledge and a serious attention to detail. Before attempting to shoot your Browning Model 1885 BPCR you must know and understand case preparation, bullet casting and/or preparation, bullet lubrication, Black Powder/Pyrodex load specifications, the powder-to-case loading process, cartridge preparation/maintenance, primers, case resizing, trimming and reforming procedures, powder stor-

age, as well as many other procedures common only to Black Powder cartridge reloading. Misuse or neglect of any aspect of shooting your Model 1885 BPCR can be dangerous, causing damage to your rifle and injury or death to yourself and bystanders.

Ammunition

WARNING: BLACK POWDER OR PYRODEX CARTRIDGE LOADING MUST BE PERFORMED WITH EXTREME CAUTION. FOLLOW ALL INSTRUCTIONS IN THIS MANUAL AND MANUALS PROVIDED WITH YOUR LOADING COMPONENTS.

BEFORE EVER ATTEMPTING TO SHOOT BLACK POWDER LOADS IN YOUR MODEL 1885 BPCR IT IS ESSENTIAL THAT YOU BECOME TOTALLY FAMILIAR WITH THE TECHNICALITIES OF BLACK POWDER CARTRIDGE RELOADING. YOU MUST UNDERSTAND BULLET CASTING, BULLET LUBRICATION, DUPLEX LOADS, THE APPROPRIATE PRIMERS, POWDER TYPES AND PROPER POWDER LOADING TECHNIQUES. MANUALS ARE AVAILABLE FROM COMPANIES MAKING BLACK POWDER CARTRIDGE COMPONENTS AS WELL AS OTHER SOURCES.

FAILURE TO LOAD BLACK POWDER CARTRIDGES CORRECTLY OR FAILURE TO FOLLOW ANY OF THE INSTRUCTIONS IN THIS MANUAL CAN CAUSE EXTENSIVE DAMAGE TO YOUR GUN AND POSSIBLE SERIOUS INJURY OR DEATH TO YOURSELF AND OTHERS.

Make sure, before ever attempting to shoot, that you are using the correct type and caliber of ammunition for your specific Browning BPCR rifle. The caliber is inscribed on the right side of the barrel. It will read either:

(1) CALIBER 40-65 BLACK POWDER ONLY

This version of the BPCR is designed to be used with black powder or pyrodex 40-65 caliber loads only.

(2) CALIBER 45-70 GOVT. RECOMMENDED FOR BLACK POWDER

This version of the BPCR is designed to be used with black powder or Pyrodex 45-70 caliber loads. Smokeless powder loads are also permissible under

the conditions explained below under the heading "Caliber 45-70 Gvt."

CALIBER 40-65 —

This version of the BPCR is designed only for the specialized 40-65 cartridge. This is a unique cartridge which requires careful attention to both the dimensions of the cartridge as well as to the bullet and the black powder or Pyrodex loading specifications. The barrel on your 40-65 BPCR is an 8-groove design with .004" deep rifling. This rifling is configured and recommended specifically for use with heavy cast bullets only. Cases must be formed from existing 45-70 brass. Make sure you follow these specifications:

- Cast bullet diameter should be no smaller than .408" and no larger than .410". Consult a current bullet casting manual for instructions.
- Maximum length of the case must not exceed 2.10".
- Use only commercially available case reforming dies designed for the 40-65 cartridge. Consult a current reloading manual from the company providing your reloading dies.

CALIBER 45-70 GOVT. —

This is a very popular black powder cartridge for competitive shooting. The BPCR version of the Model 1885 is designed specifically for use with black powder or Pyrodex. The 8-groove .004" deep rifling is ideally suited to the very heavy cast bullets used by 45-70 shooters. The barrel of this rifle can also accept the pressures of commercially loaded smokeless 45-70 ammunition with jacketed ammunition. However, remember that the barrel of this rifle is designed for cast bullets using black powder.

REMEMBER THE FOLLOWING WHEN SHOOTING SMOKELESS POWDER LOADS IN YOUR 45-70 VERSION:

THE BARREL AND ACTION OF THIS RIFLE HAVE BEEN MADE WITH SUBSTANTIAL SAFETY MARGINS OVER THE PRESSURES DEVELOPED BY ESTABLISHED AMERICAN COMMERCIAL LOADS. NEVERTHELESS, BROWNING ASSUMES NO LIABILITY FOR INCIDENTS WHICH OCCUR THROUGH THE USE OF CARTRIDGES OF NONSTANDARD DIMENSIONS WHICH DEVELOP PRESSURES IN EXCESS OF COMMERCIALY

AVAILABLE AMMUNITION WHICH HAS BEEN LOADED IN ACCORDANCE WITH STANDARDS ESTABLISHED BY THE SPORTING ARMS AND AMMUNITION MANUFACTURERS' INSTITUTE (SAAMI).

Cleaning your BPCR

General cleaning procedures and cautions outlined earlier for cleaning after shooting smokeless powder loads (on High and Low Wall models) also apply to your BPCR. However there are some unique differences — especially because you will generally be shooting black powder or Pyrodex loads and cast lead bullets.

You should clean your Model 1885 after every day of shooting, and more often if it becomes excessively dirty or if the barrel becomes excessively fouled. Regular cleaning of the barrel aids greatly in maintaining shot-to-shot accuracy. Normal cleaning of the BPCR includes cleaning the barrel/chamber, brushing/flushing the action and oiling key parts.

BEFORE PERFORMING ANY CLEANING BE CERTAIN THE RIFLE IS UNLOADED AND THE LEVER IS IN THE OPEN, OR DOWN POSITION.

FAILURE TO MAINTAIN YOUR RIFLE PROPERLY CAN DAMAGE IT AND SEVERELY AFFECT ACCURACY. IT IS ALSO ESSENTIAL THAT YOUR RIFLE (ESPECIALLY THE BARREL) BE KEPT CLEAN TO ASSURE THAT CHAMBER PRESSURES ARE NORMAL AND SAFE.

Follow the following instructions carefully to clean your Model 1885 BPCR.

CLEANING THE BARREL —

1. We recommend that for cleaning it is best to place your rifle in a rifle vise or cradle. Be careful not to mar the stock when doing so. If you don't have a vise or cradle be sure your rifle is set securely on rags on a table and — if possible — have a second person hold the rifle.
2. Fold down the rear Vernier sight and cover it with a rag to protect it and the stock from the cleaning rod and from residues coming from the barrel.
3. As with all firearms that use black powder or Pyrodex you should use a good black powder solvent to clean the bore and chamber. With a cleaning rod properly sized for your rifle's bore, run a

tight fitting patch soaked in black powder solvent through the bore. Start at the breech end. It is advisable not to clean from the muzzle end to avoid damaging the crown of the barrel.

4. Brush the bore using a copper or stainless steel bristle brush of the proper caliber. Push it completely through (to avoid breaking off bristles) and draw it fully back out several times.
5. Next, run another tight fitting patch soaked in black powder solvent through the bore.
6. Repeatedly swab the bore with dry patches until they come out clean.
7. Inspect the bore and chamber (a bore light is very helpful for this). If necessary, repeat steps 3 through 6 again until the barrel appears completely clean of any powder or lead residues.

CLEANING THE BREECH AREA —

Black powder and Pyrodex will leave more residues than smokeless powder, making it very important that you carefully inspect the exposed working parts of your rifle to assure they are clean. Follow these steps:

1. Clean any debris from the rim and extractor cutout at the breech end of the barrel. Use solvent and a brush (an old tooth brush is ideal). A small pic may be helpful, but avoid marring the surfaces.
2. In the process of cleaning and shooting, some residues will fall down into the action itself. It is important to clean them out as completely as possible. If they are left in the inside of the action they will gum up the action or cause corrosion. With the lever down and the action open, clean the action by spraying aerosol cleaner/degreaser solvent down into the action. Then spray up into the action from underneath, paying special attention to where the hammer main springs are exposed. Repeat if necessary.
3. Once the solvent runs out of the action, clean completely by spraying the action area both top and bottom with a good aerosol corrosion preventative oil like Browning Oil.

FINAL CLEANING STEPS —

With a quality oil like Browning Oil run one or two oiled patches through the bore and chamber for protection. Carefully wipe down your entire rifle as explained under the section for cleaning the High and Low Wall Model 1885 rifles found earlier in this manual.

Special BPCR Sights

The Browning Model 1885 BPCR (Black Powder Cartridge Rifle) is specially fitted to use the Browning Vernier rear sight with soulé windage system and a hooded front globe-type sight with spirit level. This is an authentic sight system patterned virtually identically to those used by target shooters in the late 1800s. Its unique design allows for adjustments as fine as 1/4 minute of angle. The Model 1885 has long been a choice of serious marksmen. Now the 1885's accuracy is matched by the precision of the Vernier Sight.

WARNING: CAREFULLY READ THE FOLLOWING INSTRUCTIONS BEFORE INSTALLING OR USING YOUR VERNIER SIGHT.

FRONT SIGHT INSTALLATION —

Eight separate front sight inserts are provided for your front sight on a special sheet. Carefully break each sight insert from the sheet by firmly holding the entire insert between the thumb and forefinger. Work the insert back and forth gently until it cleanly breaks from the sheet (a plastic container is provided for storage of sight inserts after they are broken from the special sheet).

1. Remove the sight nut from the front sight body by turning its knurled end counterclockwise. Select which sight insert you wish to use and place it in the sight body. The sides of each insert are designed to fit snugly into the notches in the side of the front sight body.
2. Before rethreading the sight nut into the sight body, firmly snug the insert completely in the front sight body or damage to the insert will occur. Replace the sight nut and tighten it firmly against the insert.

To remove an insert from the front sight body, remove the threaded sight nut then gently pick the insert out with a small screwdriver being careful to not damage either the insert or the sight body.

REAR SIGHT INSTALLATION—

The rear Vernier sight assembly is secured to the tang of the rifle using the two screws supplied. When installing the rear sight assembly, be careful not to mar or gouge the rifle's finish. The rear sight assembly features a detent that securely holds the sight in place during use and allows it to be folded down for transportation. In the folded position, the rear sight should not be allowed to touch the buttstock of the rifle as it will mar the rifle's finish.

The rear sight assembly allows you to choose from three separate aperture sizes: .050", .060", and .070". The size of the aperture is stamped on the back side of

the sight disk as 50, 60 or 70, respectively. The different sized apertures allow you to adjust to different light conditions.

The sight disk is threaded into the elevator and when secured, performs a lock-down function to prevent vertical movement of the elevator.

WARNING: BEFORE MAKING ANY VERTICAL ADJUSTMENT OF THE ELEVATOR, BE SURE TO LOOSEN THE SIGHT DISK A HALF TURN. FAILURE TO DO SO WILL RESULT IN DAMAGE TO THE SIGHT.

SIGHT ADJUSTMENT INSTRUCTIONS —**Windage (horizontal adjustment):**

Adjustments are made by turning the windage knob. The mechanism is built on a left-hand thread therefore, clockwise turns move the sight body to the left. Counterclockwise turns move the sight body to the right.

The windage knob features large and small index marks on the right side. Rotating the assembly from one large mark to the next results in 1/2 minute of

angle of adjustment. Moving from a large mark to the nearest small index mark provides 1/4 minute of angle of adjustment. One entire revolution of the windage knob equals 2 1/2 minutes of angle.

Elevation (Vertical adjustment):

Adjustments are made by turning the elevation knob.

REMEMBER: BEFORE MAKING ANY VERTICAL ADJUSTMENT OF THE ELEVATOR, BE SURE TO LOOSEN THE SIGHT DISK A HALF TURN. FAILURE TO DO SO WILL RESULT IN DAMAGE TO THE SIGHT.

The rear sight ladder or staff is indexed in increments of 5 minutes of angle. The elevator is indexed in increments of 1 minute of angle. Note how the smaller index marks on the elevator do not align themselves with any index mark on the staff at this point.

In the example the elevator is set to the "25" index mark (see figure A). To move the elevator up one minute of angle (to "26"), turn the elevation knob clockwise until the first small index mark on the elevator aligns with the "30" index mark on the staff (see figure B). To continue an additional minute of angle (to "27"), turn the elevation knob until the second small index mark on the elevator aligns with the "35" index mark on the staff (see figure C).

To continue in increments of one minute of angle, continue the adjustment procedure as explained, always aligning the next index mark on the elevator with the very next index mark on the staff.

When a full five minute cycle of angle has been finished the first line on the elevator will align with the next 5 minute mark on the staff. (In this example, the "30" index mark.)

If you have any technical questions concerning the sights on your new rifle please feel free to call our customer service department.

Good luck with your new Model 1885 BPCR.

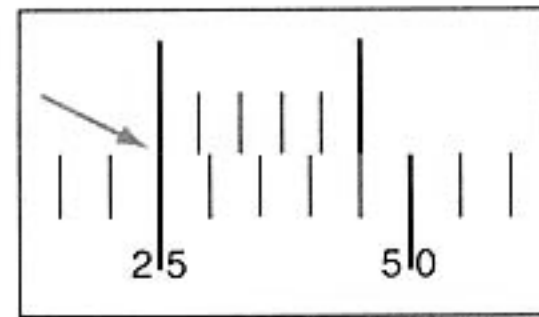


FIGURE A

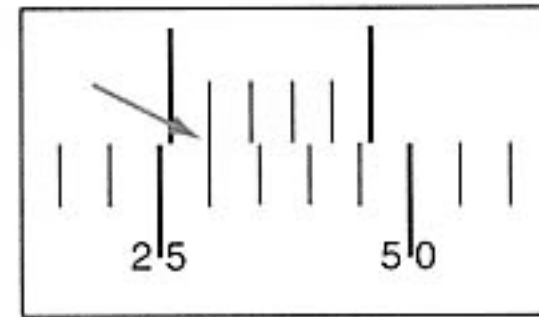


FIGURE B

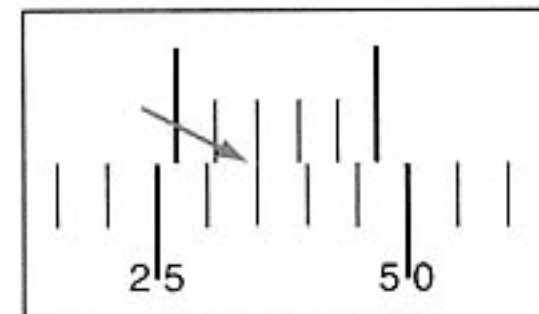


FIGURE C

Service or Repair

If your firearm should require service or repairs, we suggest you first contact a local recommended Browning Firearms Service Center. Contact your Browning sporting goods dealer or call our Service Department for the address of the Service Center nearest you. Otherwise, you may send your firearm directly to our own Service Department. For technical questions about your firearm or service call our Service Department.

Browning Service Department
3005 Arnold Tenbrook Road
Arnold, Missouri 63010-9406
Phone: 1-800-322-4626

Canadian Customers call or write:

Browning Canada Sports Ltd./Ltee,
5617 Chemin St-Francois
St-Laurent, Quebec H4S 1W6
Phone: (514) 333-7261

When returning your firearm for servicing, you *must* do the following:

- Be sure it is completely unloaded.
- Package it securely in a cardboard container.
- Enclose a letter with your firearm that clearly describes the trouble experienced and the repairs or alterations desired.
- If convenient, send a copy of the letter to us separately.
- Never return ammunition with your firearm. It is against postal and most commerce regulations.

If you have any questions about this manual or about any other Browning products, call or write our Consumer Information Department:

Browning Consumer Information
Morgan, Utah 84050
Phone: (801) 876-2711