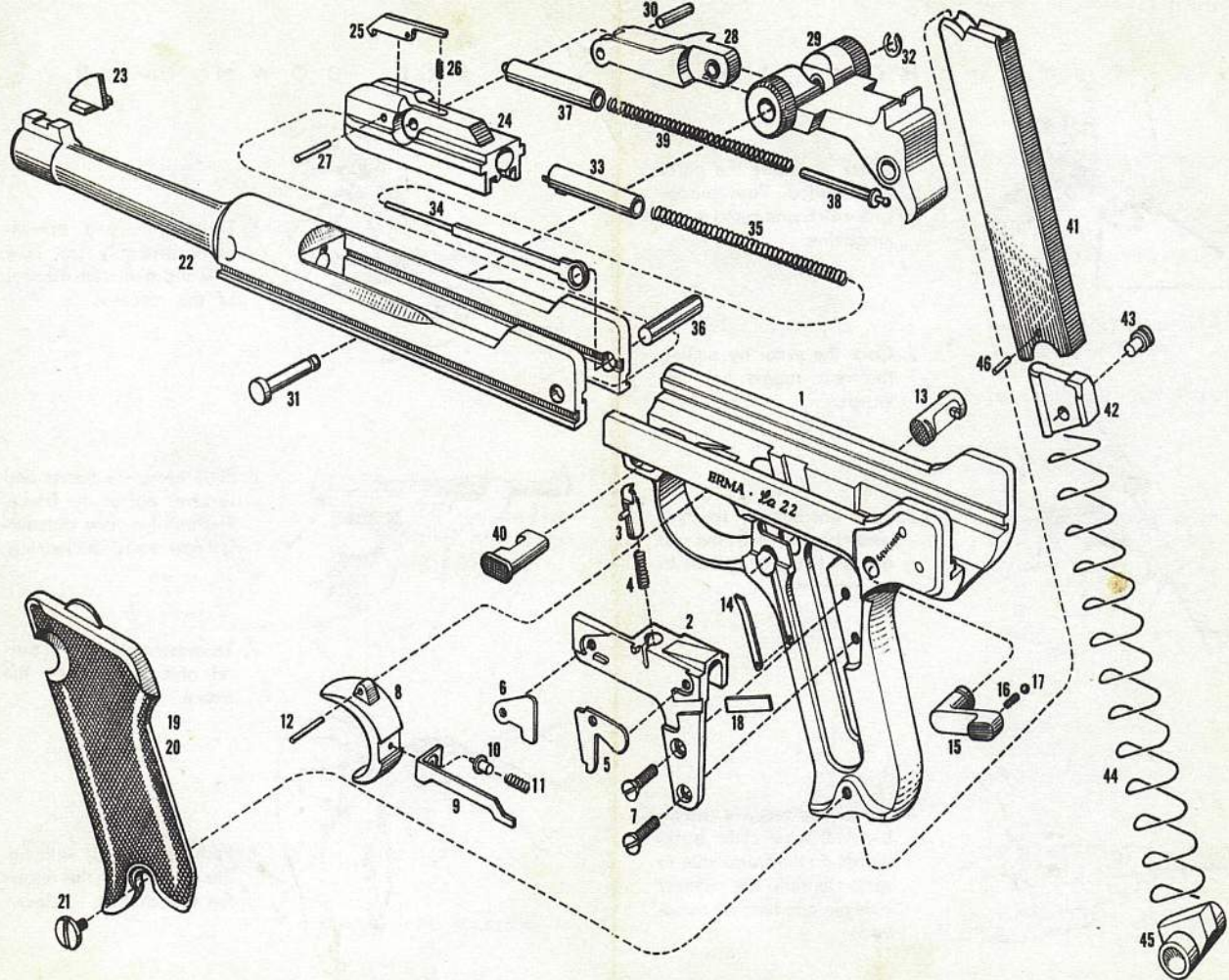
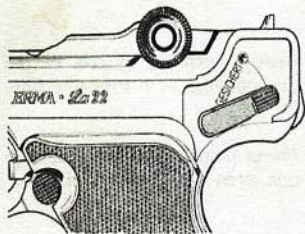


ERMA
LA 22



LOADING YOUR GUN



1. Before starting the loading procedure, push the safety catch downwards until you can read the word „GESICHERT“, which means safe.

2. Push magazine catch and remove the magazine.

3. The magazine holds 8 shots and is filled by placing the rounds one by one into the magazine.

4. The filled magazine should be inserted into the gun while the safety catch is still applied. The right hand holding the grip so that the forefinger lies alongside the trigger guard, but not touching the trigger.

5. Release the safety catch and pull up and backwards the rear toggle link as far as it will go and then release it. This will carry the first bullet from the magazine into the barrel and the pistol is now ready to fire. The safety catch can now be reapplied.



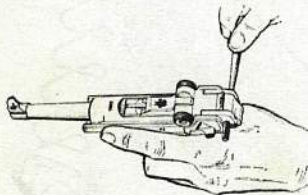
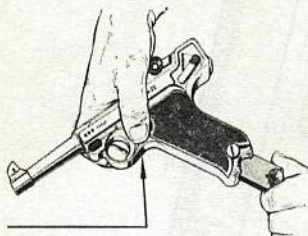
HOW TO

1. Check to ensure the pistol is unloaded. Push magazine catch and remove the magazine.

2. Cock the pistol by pulling the rear toggle link upwards.

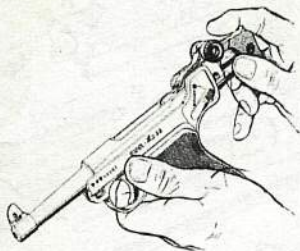
3. Push barrel with receiver assembly forward; this will enable the locking bolt to be removed.

4. Barrel and receiver assembly will now slide backwards on the frame due to spring tension; the receiver axle pin can then be removed.



T A K E D O W N A N D

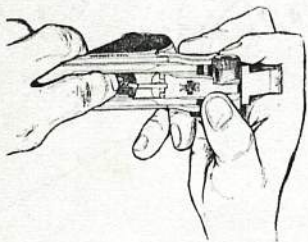
A S S E M B L E



5. Toggle link and breechblock assembly can now be withdrawn from the rear of the receiver.



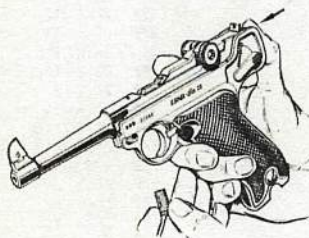
6. Slide complete barrel and receiver out of the frame. The pistol is now dismantled and ready for cleaning.



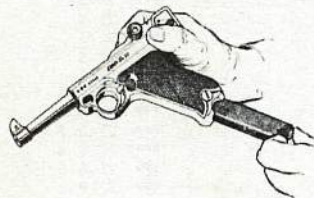
7. To reassemble, slide in barrel and receiver on the frame.
8. Push downwards with finger tip the sear, this allows the breechblock to close.



9. Insert the receiver axle pin.



10. Pull the barrel forward against spring tension and at the same time insert the locking bolt.



11. Replace the magazine.

DESCRIPTION

The ERMA-L.A. 22 is an 8 shot semi-automatic pistol with toggle breech mechanism in cal. 22 L. R.

TECHNICAL DATA

Overall Length: 22,5 cm (9")
 Length of Barrel: 8,0 cm (3 1/4")
 Height of Pistol: 14,0 cm (5 3/4")
 Weight of Pistol: 1,0 kos. (24 oz.)
 Capacity of Magazine:
 8 cartridges cal. 22 L. R.



Please use only high velocity cartridges cal. .22 L. R.

PARTS LIST

1	Grip and body unit	EPP .22-1-1
2	Sear housing	EPP .22-1-2-1
3	Sear	EPP .22-1-2-2
4	Sear spring	EPP .22-1-2-3
5	Sear release	EPP .22-1-2-4
6	Sear bar disconnecter	EPP .22-1-2-5
7	Sear housing screw	AM 4 x 10 DIN 63
8	Trigger	EPP .22-1-3
9	Trigger bar	EPP .22-1-4
10	Trigger bar plunger	EPP .22-1-5
11	Trigger bar plunger spring	EPP .22-1-6
12	Trigger pin	2 m 6 x 16 DIN 7
13	Magazine catch	EPP .22-1-7
14	Magazine catch spring	EPP .22-1-8
15	Safety catch	EPP .22-1-9
16	Safety catch spring	EPP .22-3-1-3
17	Ball	1/8" III DIN 5401
18	Safety bar	EPP .22-1-11
19	Grip plate, right	EPP .22-1-12
20	Grip plate, left	EPP .22-1-13
21	Grip plate screw	M 4 x 5 DIN 921
22	Barrel with receiver	EPP .22-2-1
23	Front sight	EPP .22-2-2
24	Breechblock	EPP .22-3-1-1
25	Extractor	EPP .22-3-1-2
26	Extractor spring	EPP .22-3-1-3
27	Extractor pin	2 m 6 x 12 DIN 7
28	Front toggle link	EPP .22-3-2
29	Rear toggle link	EPP .22-3-3
30	Breechblock pin	EPP .22-3-4
31	Toggle axle	EPP .22-3-5
32	Locking washer	3,2 DIN 6799
33	Firing pin	EPP .22-3-6
34	Firing pin spring guide	EPP .22-3-7
35	Firing pin spring	EPP .22-3-8
36	Receiver axle pin	EPP .22-3-9
37	Spring sleeve	EPP .22-4
38	Spring pin	EPP .22-5
39	Spring	EPP .22-6
40	Locking bolt	EPP .22-7
41	Magazine tube	EPP .22-8-1
42	Follower	EPP .22-8-2
43	Follower knob	EPP .22-8-3
44	Magazine spring	EPP .22-8-4
45	Magazine base	EPP .22-8-5
46	Magazine base pin	EPP .22-8-6