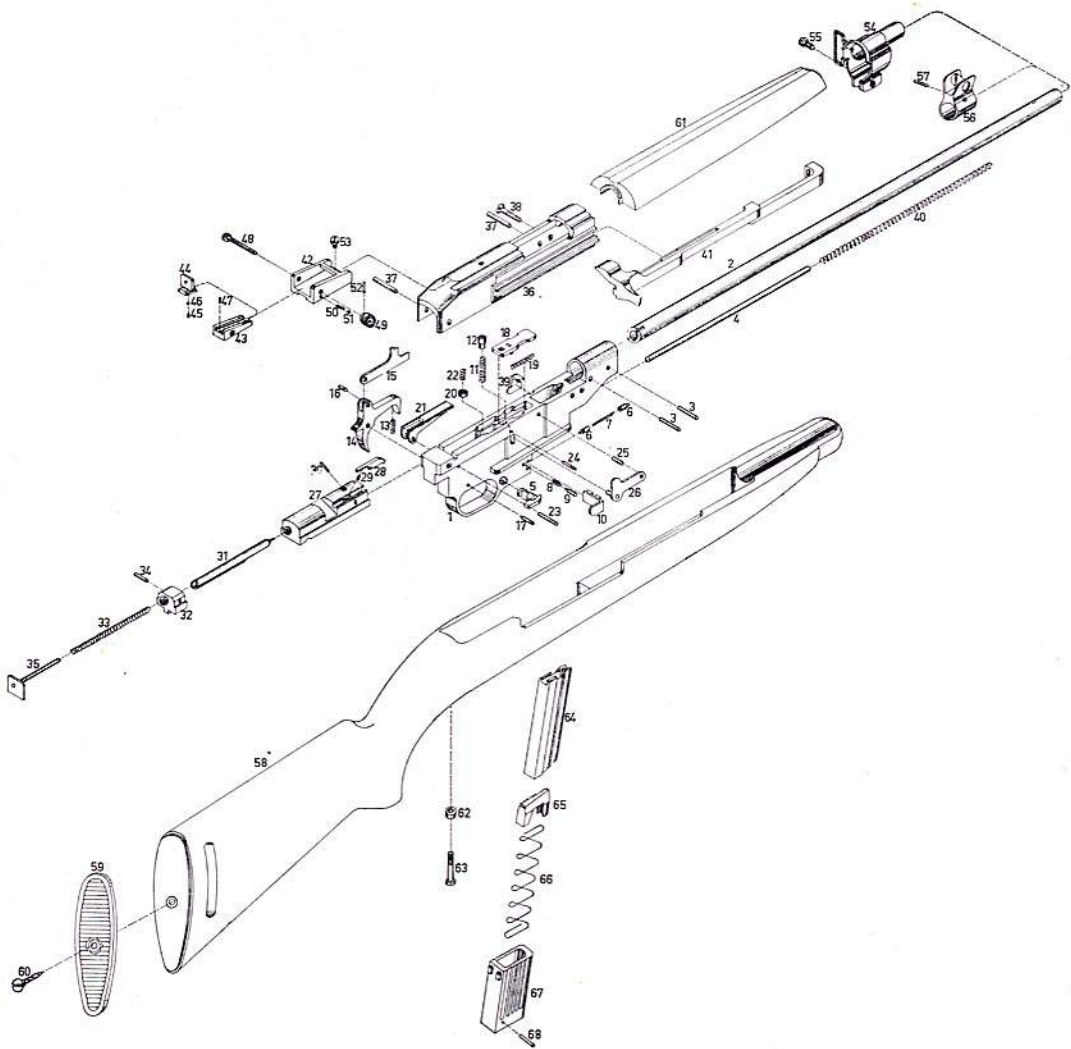


**TORRO .22**



Please specify on order parts number and name.

## Spare parts:

- |     |                                   |     |   |
|-----|-----------------------------------|-----|---|
| 1   | Trigger housing                   | 39  | Ejector                                   |
| 2   | Barrel                            | 40  | Operating slide spring                    |
| 3   | Barrel pin (2)                    | 41  | Operating slide                           |
| 4   | Operating slide spring guide      | 42a | Rear sight assembly                       |
| 5   | Safety lever                      | 42  | Rear sight base                           |
| 6   | Safety detent plunger (2)         | 43  | Rear sight ramp                           |
| 7   | Safety detent plunger spring      | 44  | Rear sight sliding aperture               |
| 8   | Magazine catch spring             | 45  | Rear sight sliding spring                 |
| 9   | Magazine catch spring plunger     | 46  | Rear sight sliding ball                   |
| 10  | Magazine catch                    | 47  | Rear sight ramp pin                       |
| 11  | Trigger bar spring                | 48  | Rear sight windage screw                  |
| 12  | Trigger bar spring plunger        | 49  | Rear sight windage knob                   |
| 13  | Trigger spring                    | 50  | Windage stop spring                       |
| 14a | Trigger assembly                  | 51  | Windage stop ball                         |
| 14  | Trigger                           | 52  | Windage stop pin                          |
| 15  | Trigger bar                       | 53  | Rear sight base screw                     |
| 16  | Trigger bar pin                   | 54  | Front band assembly                       |
| 17  | Trigger pin                       | 55  | Front band screw                          |
| 18  | Sear release plate                | 56  | Front sight assembly                      |
| 19  | Sear release plate spring         | 57  | Front sight pin                           |
| 20  | Sear spring plunger               | 58a | Stock assembly                            |
| 21  | Sear                              | 58  | Stock<br>(polished beech or oiled walnut) |
| 22  | Sear spring                       | 59  | Butt plate                                |
| 23  | Sear holding pin                  | 60  | Butt plate screw                          |
| 24  | Sear release plate pin            | 61  | Handguard assembly                        |
| 25  | Sear release pin                  | 62  | Rear guard screw plunger                  |
| 26  | Sear release                      | 63  | Rear guard screw                          |
| 27a | Bolt assembly                     | 64a | Magazine assembly                         |
| 27  | Bolt                              | 64  | Magazine tube                             |
| 28  | Extractor                         | 65  | Magazine follower                         |
| 29  | Extractor spring                  | 66  | Magazine spring                           |
| 30  | Extractor pin                     | 67  | Magazine tube holder                      |
| 31  | Firing pin                        | 68  | Magazine tube holder pin                  |
| 32  | Firing pin piece                  |     |   |
| 33  | Firing pin spring                 |     |   |
| 34  | Firing pin piece pin              |     |   |
| 35  | Recoil plate                      |     |   |
| 36  | Receiver                          |     |   |
| 37  | Trigger housing retaining pin (2) |     |   |
| 38  | Receiver screw                    |     |   |

### **Instruction of use:**

Safety on the right side of the trigger guard is engaged when safety lever points down (white point). To disengage rotate safety lever forward (red point).

To load, engage safety, and insert the filled magazine into magazine opening, making sure magazine snaps into place. Hook over operating slide handle, pull operating slide to the rear and release it (the closing of the bolt must be done by spring pressure).

Disengage safety and pull the trigger.

Bolt remains open when magazine is empty. Push magazine catch to the left and remove magazine. Now bolt closes.

Attention: Never point the weapon at anyone even when unloaded, any weapon is dangerous.

### **Disassembly Procedure:**

Loosen front band screw (55), remove rear guard screw (63), slip front band (54) forward on barrel, and lift wooden handguard (61) free.

Separate barrel and receiver assembly from stock.

Push both trigger housing retaining pins (37) out of receiver and remove receiver screw (38).

Lift receiver (36) free (push the bolt downward with finger tip).

Pull operating slide (41), operating slide spring (40), and operating slide spring guide (4) forward.

Raise recoil plate (35) and remove to rear firing pin spring (33), firing pin piece (31 a) together with bolt.

---

### **Technical data**

caliber	.22 L.R.
mechanism type	semi-automatic, blowback
barrel	450mm (18"), grooved for scope mounting
sights	aperture rear sight adjustable for windage and elevation, blade front sight with strong protector, distance between sights 530mm (20.1/8"), adjustable range 25/50/75/100m
stock	with handguard, dull polished beech wood or walnut
magazine	10 rounds / 15 rounds
safety	safety lever on the right side of the trigger guard
over-all length	900mm (35.1/2")
weight	2.550 kos (5.6 lbs)