



**TANFOGLIO**

*Raptor*

Single Action Single Shot Pistol

**Instructions - Warranty - READ INSTRUCTIONS BEFORE USING GUN**

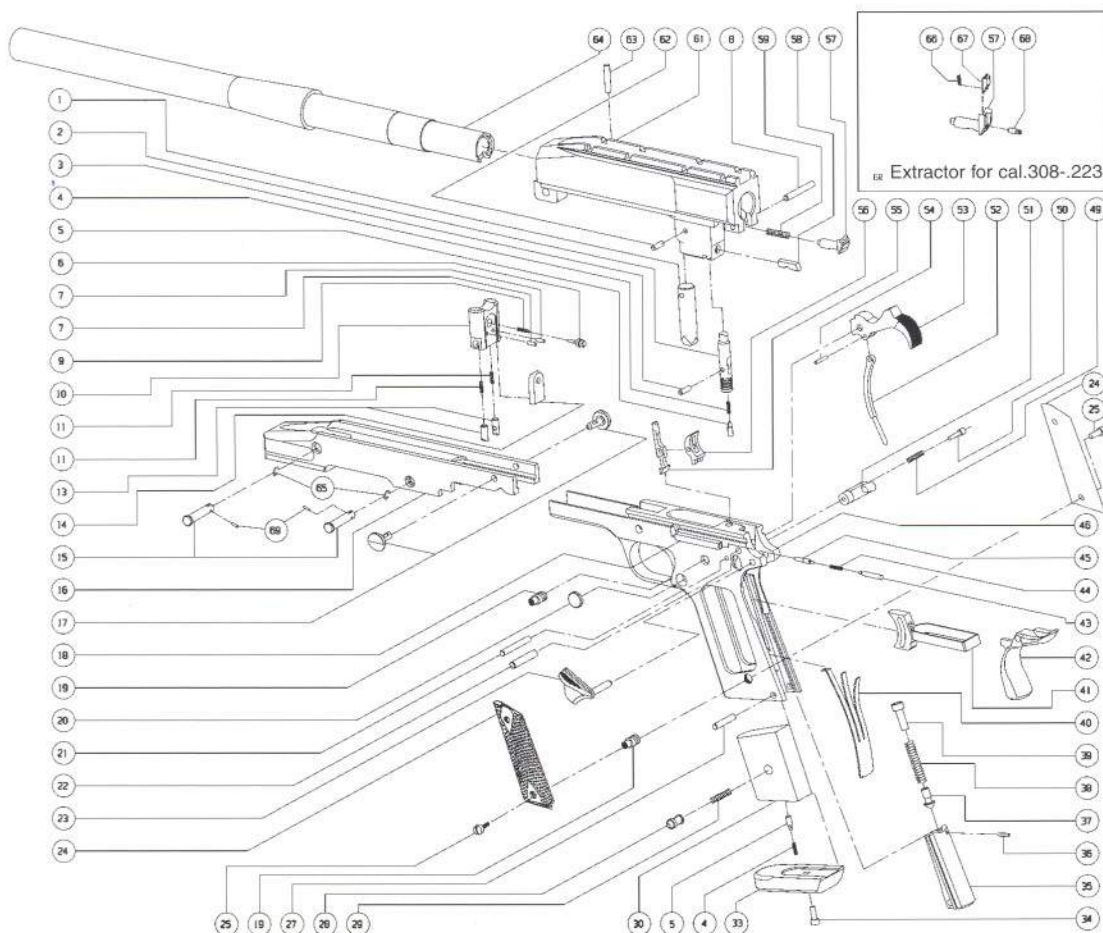
**WARNING!**

THANK YOU FOR CHOOSING A *TANFOGLIO* PRODUCT.  
THE GUN YOU HAVE PURCHASED, OFFERS NUMEROUS MECHANICAL INNOVATIONS INTRODUCING NEW FUNCTIONAL PARTS, AND BEING **SUBSTANTIALLY DIFFERENT** FROM ANY OTHER PISTOL THAT CAN BE FOUND ON THE MARKETS. FOR THIS REASON, IT IS NECESSARY THAT YOU READ THIS MANUAL CAREFULLY AND ACQUIRE A GOOD KNOWLEDGE OF THE GUN, **BEFORE YOU USE IT.**  
THE *TANFOGLIO RAPTOR* IS A PISTOL THAT USES RIFLE AMMUNITIONS: THIS GUN MUST THEREFORE BE CONSIDERED AS DANGEROUS **WELL BEYOND 1 MILE DISTANCE.**  
WE RECOMMEND A CAREFUL STUDY OF THE SYSTEM OF **ALL SAFETIES** THAT ARE BUILT IN THE *TANFOGLIO RAPTOR*. FOR BEGINNERS, OR FOR THOSE SHOOTERS WHO HAVE NEVER HANDLED A RIFLE-CLASS PISTOL LIKE THE *TANFOGLIO RAPTOR*, WE RECOMMEND **TO PAY MAXIMUM ATTENTION AT THE MOMENT OF PULLING THE TRIGGER:** THE MANUFACTURER WILL NOT ASSUME ANY RESPONSIBILITY FOR DAMAGES ARISING FROM POOR HANDLING OF THE GUN WHILE SHOOTING. THE *TANFOGLIO RAPTOR* HOWEVER, IS FULLY CONTROLLABLE BY ANY MEDIUM BUILD SHOOTER. FOR USES OTHER THAN SPORTS AND SILHOUETTE TARGET SHOOTING, WHERE POSSIBLE, WE RECOMMEND EXTRA CARE IN THE CONTROL OF AMMUNITION TO BE USED IN THE FIELD, AND THE PROPER FUNCTIONING IN THE *TANFOGLIO RAPTOR*.  
THE *TANFOGLIO RAPTOR* COMES WITH INTEGRAL *WARNE* STEEL RINGS FOR SCOPE MOUNT, AMONGST THE BEST RAPID MOUNTS AVAILABLE ON THE MARKET. FOR SCOPE CHOICE, **WE RECOMMEND A MAGNIFICATION FACTOR OF AT LEAST 4X**, IF NOT MORE, IN ORDER TO MAKE THE MOST OF THE HIGH BALLISTIC PERFORMANCE OF THE *TANFOGLIO RAPTOR*.

**STATEMENT OF LIMITED WARRANTY**

We hereby warrant this firearm against defective workmanship and materials for the period of one year. During this one year period we will repair or replace (at our option) any part, series of parts, and or the entire pistol if it proves to be defective.  
There will be no charge for parts and labor but the customer must assume transportation to and from our repair facilities in Italy.  
This warranty is voided by work done by others, misuse, modification, or transfer of ownership by the original owner. This warranty is also voided by the use of reloaded, hot loaded, or non standard ammunition. No warranty is implied against normal wear and tear. Our warranty of selebilty and fitness applies only for the effective period of the expressed limited warranty.

# PARTS CODIFICATION



- 1 - BARREL LATCH
- 2 - EJECTOR PIN
- 3 - EJECTOR PIN STOP
- 4 - PLATE PIN STOP AND EJECTOR PIN STOP
- 5 - EJECTOR SPRING GUIDE AND PLATE GUIDE
- 6 - FIRING PIN
- 7 - BOLT STOP PIN
- 8 - HAMMER SAFETY CROSS PIN
- 9 - FIRING PIN SPRING
- 10 - BOLT BLOCK
- 11 - BOLT BLOCK PLUNGER SPRING
- 13 - BOLT BLOCK PLUNGER
- 14 - FIRING PIN STOP PLATE
- 15 - CARRIAGE AND BARREL CROSSPIN
- 16 - CARRIAGE
- 17 - BOLT BLOCK PINS
- 18 - SAFETY GUIDE ROD
- 19 - GRIP SCREW WASHER
- 20 - LATCH BUTTON
- 21 - SEAR LEVER PIN
- 22 - HAMMER PIN
- 23 - SAFETY
- 24 - GRIP
- 25 - GRIP SCREWS
- 27 - MAIN HOUSING PIN
- 28 - BOTTOM PLATE GUIDE STOP
- 29 - PLATE GUIDE STOP SPRING
- 30 - BOTTOM PLATE GUIDE
- 33 - BOTTOM PLATE
- 34 - BOTTOM PLATE SCREW
- 35 - MAINSPRING HOUSING
- 36 - MAINSPRING CAP PIN
- 37 - MAINSPRING HOUS. PIN RETAINER
- 38 - MAINSPRING
- 39 - MAINSPRING GUIDE
- 40 - SEAR SPRING
- 41 - ASSEMBLED TRIGGER
- 42 - GRIP SAFETY
- 43 - SAFETY PLUNGER

- 44 - SAFETY PLUNGER SPRING
- 45 - FRONT PLUNGER
- 46 - FRAME
- 49 - LATCH STOP SPRING
- 50 - LATCH STOP SPRING PLUNGER
- 51 - LATCH STOP
- 52 - HAMMER ROD
- 53 - HAMMER
- 54 - HAMMER ROD PIN
- 55 - INTERRUPTOR
- 56 - SEAR LEVER
- 57 - EXTRACTOR
- 58 - EXTRACTOR PLATE
- 59 - EXTRACTOR SPRING
- 61 - RECEIVER
- 62 - LATCH PIN
- 63 - BARREL PIN
- 64 - BARREL
- 65 - CARRIAGE PIN STOP
- 66 - EXTRACTOR EDGE PIN
- 67 - EXTRACTOR EDGE
- 68 - EXTRACTOR EDGE STOP
- 69 - ELASTIC RING PIN STOP

## WARNINGS! READ THIS AND BE A SAFE SHOOTER

- Always keep the muzzle pointed in a safe direction.
- Never point a gun at any person or thing you don't intend to shoot.
- Treat every gun as if it was loaded...all the time.
- Get instructions from a competent instructor before using any gun.
- Never rely on a gun's "safety" to protect you from unsafe gun handling. A safety is only a mechanical device, not a substitute for common sense.
- Keep your fingers **off the trigger** until you are actually aiming at the target ready to shoot.
- Don't alter or modify your gun and have guns serviced regularly.
- Be certain the gun is unloaded before cleaning it.
- Always empty guns before entering a house, car, truck, boat, RV, camp or any building.
- Never leave a loaded gun unattended.
- Store guns and ammunition separately **beyond the reach of children**.
- Don't "test the safety" by pulling the trigger while the safety is on.
- Be sure of your target and backstop before you shoot. Ask yourself what your bullet will hit if it misses the target.
- Be sure that the barrel is clear of obstruction before shooting.
- Guns and alcohol or drugs don't mix. Don't take them before or during shooting activities.
- Never pull a gun towards you by the muzzle. Don't climb a tree or cross a fence or ditch with a loaded gun.
- Load and unload with the muzzle pointed in a safe direction. If a gun fails to fire when trigger is pulled, keep it pointed at the target for at least 30 seconds. Sometimes slow primer ignition will cause a "hang fire" and the cartridge will go off after a short pause.
- Never shoot at hard surfaces or water...bullets can ricochet.
- When receiving a gun open the action and check that it's unloaded.
- Never put your hand over the muzzle of a gun.
- Never leave a gun where it could fall and fire.
- Always wear protecting shooting glasses when shooting on the range, in a field or in the forest.
- Old or reloaded ammo may be dangerous. We recommend against using it.
- Spectators should be 10 feet behind and away from the shooter while loading, shooting and unloading.
- Wear hearing protection when shooting, or at a shooting range, or near shooting activities.
- Load the gun only when on the range and preparing to fire and unload it before leaving the range.
- Never carry any handgun in your pocket, purse or tucked in a belt or waistband. Use a pistol case or holster with safety flap or strap.
- Don't try to change your gun's trigger pull, because alteration of trigger pull usually affects sear engagement and may cause accidental firing.
- If you do drop your gun, unload it and check it for proper function before using it again.
- Always wear fluorescent orange vest, hat or jacket when in the woods or fields.
- Never let snow, water, mud or other material enter the barrel.
- Firearms should be unloaded when actually not in use.
- Many ammo identifications sound similar. Make sure you do not use wrong size ammo in your gun.
- Write to us concerning any items or circumstances which you don't understand and which might relate to your safety and the operation of any of our products.

**WARNING: ANY BORE OBSTRUCTION, EVEN IF IT IS ONLY PARTLY BLOCKED, MAY CAUSE THE GUN TO BLOW UP IF FIRED, OR MAY CAUSE DAMAGE TO THE GUN SUCH AS A BULGED BARREL. TO AVOID INJURY OR DEATH OF THE SHOOTER OR BYSTANDERS, CHECK THE BARREL BEFORE SHOOTING OR IF A SHOT DOES NOT SOUND NORMAL.**

## OPENING THE GUN



Using your thumb, place the hammer on the Half Cock, to avoid unnecessary pressure on the firing pin during opening procedure of the gun. At this moment, the grip safety is engaged (Photo 1).

Always keeping the muzzle end and the breech end of the gun away from yourself or bystanders, with the gripping thumb push the button latch shown in photo 2 while at the same time, with the other hand, you push down the front part of the barrel. The gun will open and the automatic ejector will cycle.

**WARNING:** remember that the Raptor has a powerful automatic Ejector and the chamber could still contain a spent case, which could hurt the shooter or bystanders upon opening the gun.



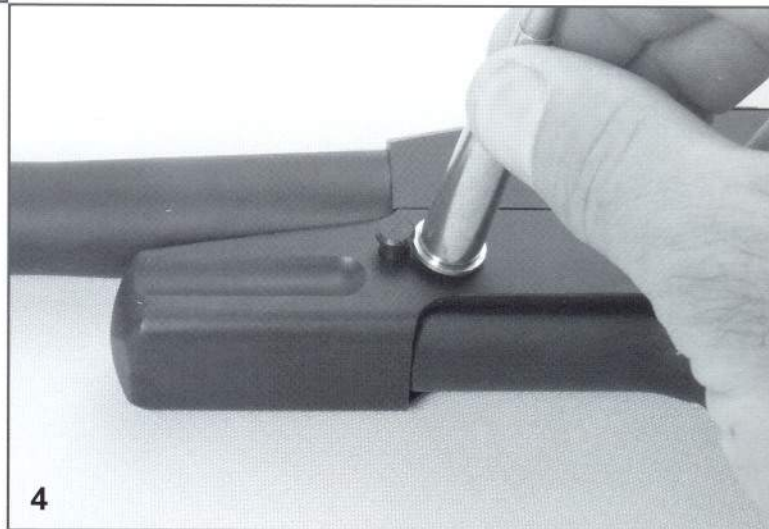
## BARREL TAKEDOWN



Using a suitable tool, push out the barrel pin as shown in Photo 3 until part of it will protrude on the other side of the gun.

The barrel pin is identical to the cradle pin, located above the trigger guard in Photo 3: if necessary or in emergency, the latter can be used as barrel pin, as it is not fundamental for the firing of the gun.

**WARNING:** while disassembling the barrel, avoid to fully push out the barrel pin from the cradle housing, running the risk of losing it: the pin will still be kept in the cradle housing thanks to the elastic ring-stop.



## BOLT TAKEDOWN

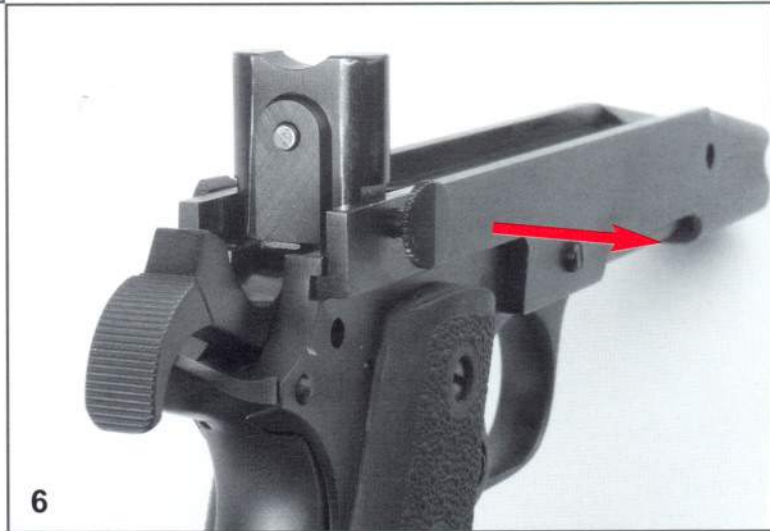


After having removed the barrel lifting it as shown in Photo 5, while depressing at the same time the barrel latch button, the bolt-block, firing pin and firing pin spring can be reached.

The bolt-block is kept into place between the two sides of the cradle with two pivoting retention pins. These can be taken down by hand, rotating them either clock or anticlockwise by at least 1/4 of a turn and then removing them completely from the cradle housing.

For reassembly, they can be simply pushed back into place, checking that the flat head bears the beveled face towards the grip of the gun.

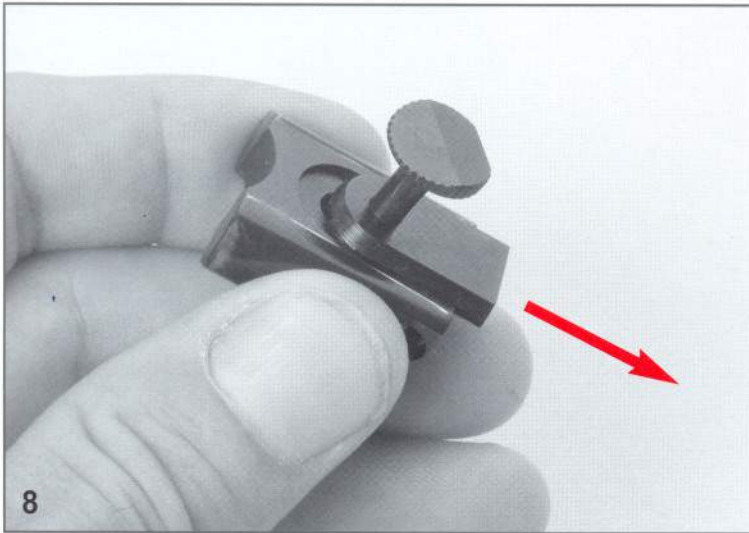
**WARNING:** with home safety in mind, removing the bolt-block will for instance make the gun completely useless. The bolt-block is identical to all calibers available for the Tanfoglio Raptor.



## FIRING PIN TAKEDOWN

Using one of the two bolt-block retention side pins, the firing pin and firing pin spring can be taken down by hand in a few seconds. Depress the firing pin by inserting the retention side pin in the back plate hole, sliding then the back plate away for about 1/4 of an inch.

**WARNING:** make sure you hold the firing pin and spring before these are free from the back plate: these two items are very small and could get easily lost, ruining your shooting or hunting day.



8

The Tanfoglio Raptor has been equipped with an additional hammer safety, which will prevent accidental discharge of the gun when the barrel is closed too violently (*Slam-Fire*). This safety consists of a steel cross-pin as shown in Photo 9: this cross-pin will prevent the barrel from closing on the frame if the hammer hasn't been previously set at Half Cock.

**WARNING:** on the contrary, the gun will always open even with the hammer fully lowered, thanks to the inner profile of the same, which makes it cam over the cross-pin. However, we strongly recommend always to go through the Half Cock position upon opening or closing the gun (See SHOOTING PROCEDURE).



9

## SHOOTING PROCEDURE



**WARNING: THE TANFOGLIO RAPTOR CANNOT BE USED IN SHORT PISTOL RANGES, BUT ONLY IN RIFLE RANGES. THE BULLET BACKSTOPS NORMALLY USED AT PISTOL RANGES MAY NOT BE ENOUGH TO GRANT THE SAFETY OF SHOOTERS AND BYSTANDERS WHILE SHOOTING WITH THE TANFOGLIO RAPTOR.**

- 1 - Make sure you have aligned properly the scope sight with the bore of the barrel before sighting-in the gun with actual ammunition. This visual alignment can be easily carried out with the "bore-sighting" method, or even better with inner barrel optical or laser sighters.
- 2 - At the range or other suitable location, set up a reliable and steady target at the starting maximum distance of 25 yards, making sure that you can rely on a well dimensioned back stop, at least 2-3 times the size of the target.
- 3 - Wear suitable hearing and visual protections, and at least one shooting glove (for the gripping hand, when using the more powerful calibers such as .308 Winchester, .444 Marlin, .45-70 Government).
- 4 - Place the hammer on the Half Cock.
- 5 - Open the action as described in the present instructions booklet.
- 6 - Always aiming the muzzle towards the ground, chamber one round in the barrel.
- 7 - Acting on the front half of the barrel, close the action with a firm lever action, making sure that the barrel latch has fallen into the correct position (flush with the frame, on the right side of the gun).
- 8 - Once in position at the shooting line, full cock the hammer and engage the lever safety on the top left side of the frame.
- 9 - When you are sure of your target and you decide to shoot, disengage the lever safety and pull the trigger.
- 10 - After shooting, keeping the muzzle end and the breech end of the gun away from yourself and bystanders, half cock the hammer, press the button barrel latch and open the action: the spent case will be ejected 3-4 feet away, with varying speed and force from caliber to caliber.

**WARNING: for the users of calibers .444 Marlin and .45-70 Government, we recommend not to shoot with both arms straight in front of you: heavy recoil and muzzle jump could catch by surprise the shooter not used to such heavy rifle calibers.**

**In the case of a missed shot after pulling the trigger, keep the gun towards a safe direction (to the ground) for at least 30 seconds, opening the gun with great caution, always keeping the muzzle end and the breech end of the gun towards safe directions.**

## WARNING!

Because of the danger of poor or nonexistent quality control standards among some companies or people who make reloaded ammunition, and the well known fact that dangerous overloads or underloads (squib loads) sometimes occur, we recommend that only good quality ammunition be fired in our products. If you prepare your own handloads, do not exceed recommended pressures in line with those generated by standard factory loads as manufactured by reputable companies. Do not use +P Ammo or High Velocity High Pressure Ammunition.

The gun was manufactured to perform properly with the original parts as designed. It is your duty to make sure any parts you buy are installed correctly and that neither replacements nor originals are altered or changed. Your gun is a complex tool with many parts that must relate correctly to other parts. Putting a gun together wrong or with modified parts can result in a damaged gun, danger, and injury or death to your and others through malfunction. Always let a qualified gunsmith work on your gun or at least check any work not performed by a gunsmith. We at TANFOGLIO think this is a small price to pay for firearms safety.

# TANFOGLIO

Fratelli Tanfoglio Snc  
Via Valtrompia 39-41  
25063 Gardone Val Trompia (Bs) Italy  
Tel. +39-030-8910361 - Fax. +39-030-8910183  
www.tanfoglio.it info@tanfoglio.it

RT-04-1-EU